

DATE: 22th December, 2024

INVITATION TO BID NO. **MAP/MAUK/24/5376-38-2**

**Construction of 65 Smart Houses with Toilet and Verandah in District Mirpur Khas,
Sindh**

Lot # 02			
S #	Name of activity	Quantity (No)	Location
1.	Construction of Smart Houses	65	Mirpur Khas Sindh

TYPE OF PROCUREMENT: **Single stage two envelope process**

CLOSING DATE AND TIME: **Monday 06th January 2025 at 3:00 pm**

GENERAL INFORMATION

The Office of the Muslim Aid (MAP) Islamabad invites -bids from qualified, Contractors/ vendors/suppliers / Authorized Dealers, duly registered with the government of the Islamic Republic of Pakistan and Pakistan Engineering Council to submit a firm offer for the "Construction of 65 Smart Houses in Mirpur Khas, Sindh (LOT-2)". The construction firm offers from the successful bidders would form the basis for an award of a contract. -

BIDDING DOCUMENTS

The following annexes form an integral part of this invitation to Bid:

Annex A: Detailed Specification of ITB / Drawings / Design for Construction of Smart House Mirpur Khas, Sindh

Annex B: Locations / Target Villages for Construction of 65 Smart Houses with Toilet, Verandah and Kitchen)

Annex C: General Terms and Conditions for Purchase/supply of Goods

Annex D: Vendor Registration Form and Instruction for completion of bid

SECTION I: BIDDING INFORMATION

a) ACKNOWLEDGMENT

Bidders are requested to confirm the receipt of this **ITB** and send the expression of their intention to participate to the addresses (courier) provided in the "SUBMISSION OF BIDS" section of this ITB.

b) QUERIES

i) Bidders are required to submit all their **inquiries in respect of this Invitation to bid by e-mail to procurement@muslimaid.org.pk by Friday 3rd January 2025**. MUSLIM AID may, at its discretion, copy any reply to a particular question to all other invited Bidders.

IMPORTANT: Inclusion of copies of your offer with any correspondence sent directly to the attention of the responsible buyer will result in disqualification of the offer. Please send your offer directly to the address provided in this ITB's "SUBMISSION OF BIDS" section of this ITB.

c) YOUR OFFER

Please submit your offer using the submission templates provided. It should conform to the following requirements and contain all information required. The offers not conforming to the requested format will not be considered forevaluation. Your offer should include the following information:

DELIVERY TIME: All items must be delivered to the specified locations as per the schedule given in Annex C OR AS SOON AS possible after placement of the confirmed order.

- **OFFERS** can be made for part of the requirement as listed in the attached **Annex-A**
- **COST:** The cost should include the Construction of 65 Smart Houses in Mirpur Khas, Sindh (LOT-2) Transportation and

Construction of 65 Smart Houses in Mirpurkhas, Sindh (LOT-2)

all applicable taxes as per government law.

- **CURRENCY:** Your proposal must be prepared in a single currency, PAK Rupees.
- **LANGUAGE:** Bids shall be prepared in English.
- **INSPECTION:** All civil construction work Specifications are subject to inspection and will be advised at the time of delivery. The selected contractor/ Supplier will inform MUSLIM AID when the civil construction work / Supplies will be ready for inspection. The inspection will be arranged by MUSLIM AID. Please note that inspection charges resulting from the contractor's fault will be charged directly to the contractor.
- **PLACE OF INSPECTION:** The inspection will be held at the sites, as per the sites identified by MUSLIM AID.
- **COUNTRY OF ORIGIN OF THE SUPPLIER AND AREA OF OPERATION:** The bid shall state the country in which the items are manufactured.
- **BID VALIDITY:** The bid submitted must remain valid for acceptance for 03 Months from the Invitation to Bid closing date.
- **VENDOR REGISTRATION:** Contractors/suppliers are requested to complete and submit with their offer the vendor registration form (Annex D), together with the necessary supporting documentation unless they have already been registered with **Muslim Aid (MAP)** and have received purchase orders within the last 3 years. All the companies are required to submit registration documents, for example.
 - Dealers/Partnership certificates issued by principal companies/organizations
 - Certificate of registration from PEC – Category C-6 and above)
 - Certificates of Work completed within the last 3 years or so
 - National Tax Number / STN
 - Update bank statement last one year.
 - Or any other document issued by a government regulatory body certifying the legality of their business.

▪ **BID EVALUATION:**

d.1) Supplier Registration

The qualified supplier/ Contractor will be added to the vendor registration after investigation of suitability based on the submitted Vendor / Contractor Registration Form and supporting documents. The investigation involves consideration of several factors such as:

- Financial Standing (6 Monthly Bank Statement)
- Minimum three years of Previous experience in relevant civil work
- Core business
- Track record
- Minimum volume of annual work
- Technical Knowledge of the work under consideration
- Contract capacity

This will be followed later by performance evaluation as a contractor such as:

- Ability to respond quickly to the Agency's needs.
Timely Construction of 65 Smart Houses in Mirpur Khas, Sindh (LOT-2) as per agreed design / Completion works as per quality and quantity within the frame.
- Dependability of products and services.

d.2) Financial and Technical Evaluation

All proposals from contractors will be evaluated based on:

- Below 70% of technical evaluation is not considered for next stage.
- Compliance with the mentioned MUSLIM AID Specification and approved material as per samples
- Delivery Time / Completion of Work.
- After Sales Services which includes minimum warranty of six month or as per the agreed contract
- The contractor needs to quote the rate keeping in view the carriage cost of all villages of the mentioned Union Councils. No further extra cost claim will be given to the contractor after the submission of the bid.

IMPORTANT: For evaluation purposes only, the offers submitted in PKR currency

▪ SUBMISSION OF BIDS

Bids must be submitted in 2 (two) separately sealed envelopes as follows: enclosed in 1 outer sealed Envelope:

- 1 (one) sealed envelope containing technical part of the offer containing the following
 - Annex A: Detailed Specification of ITB and design for Construction of 65 Smart Houses in Mirpur Khas, Sindh (LOT-2)
 - Annex B: Locations and Work Plan/Schedule for the Civil Work
 - Annex C: General Terms and Conditions for Purchase/supply of Goods/Rehabilitation/ Construction of 65 Smart Houses in Mirpur Khas, Sindh (LOT-2)
 - Annex D: Vendor Registration Form and Instruction for completion of bid
- 1 (one) sealed envelope containing financial part of the offer

To be sent either by courier, or by hand to the following addresses clearly marked as follows:

NOT TO BE OPENED BY THE REGISTRY

MAP/MAUK/24/5376-38-2 (Construction of 65 Smart Houses in Mirpur Khas, Sindh (LOT-2))

MUSLIM AID Ad (MAP)

Plot # 1, First Floor, Executive

Business Centre, Main Double Road,

FECHS, E-11/2, Islamabad

Offers submitted must be sealed in an outer and two inner envelopes as detailed below:

- a. the outer envelope should **be marked tender Number and addressed** as above,
- b. The first inside envelope will contain the vendor Registration form, relevant registration documents
- c. The second inside envelope shall contain your financial offer dully filled prices proposal form.

IMPORTANT:

- Potential bidders must share the details of their technical staff along with the machinery.
- Potential bidders are informed that your application MUST accompany **3 % earnest money** as a call deposit in the form of a Demand Draft in the Name of 'Muslim Aid (MAP) (Please note that the cheque or copy of Demand Draft will not be acceptable) and shall reach at the office of MUSLIM AID at postal address Plot # 1, First Floor, Executive Business Centre, Main Double Road, FECHS, E-11/2, Islamabad.

All Bids must be received by **Monday 06th January 2025 at 3:00 pm**

LATE SUBMISSION OF BIDS: Bids received after the deadline for submission of BIDs and BIDs transmitted in any other manner than those indicated above will not be considered.

Bid Opening: Sealed envelope containing **financial part of the offer** will be opened for evaluation if the **supplier's technical part of the offer** has passed the technical evaluation / accepted by MUSLIM AID Technical Committee as meeting the technical specifications. Technical bids will be opened on the same day 06 January 2025 at 3:30 pm in the presence of suppliers or their representatives who wish to witness the bid opening. The financial will be opened once the technical evaluation is completed and only qualified contractors will be invited to participate in the opening of financial bids.

BID ACCEPTANCE

MUSLIM AID reserves the right to accept the whole or part of your bid. Please note **that the lowest offer is not the only criterion for acceptance of the offer**). Information provided by the bidder will constitute the basis for the eventual award for contract.

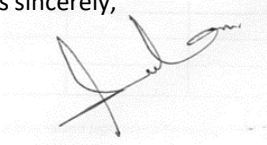
MUSLIM AID may, at its discretion, extend the deadline for the submission of proposals, by notifying all prospective suppliers in writing. The extension of the deadline may accompany a modification of the solicitation documents prepared by MUSLIM

AID at its own initiative or in response to a clarification requested by a prospective supplier.

a) CURRENCY AND PAYMENT TERMS FOR Construction of 65 Smart Houses in Mirpur Khas, Sindh (LOT-2)

Any Contract/Purchase Order (PO) issued as a result of this ITB will be made in Pakistani Rupees. All Government taxes are applicable. GST should be mentioned separately, not mentioning GST will be considered as **not a GST registered company** and it will deal accordingly if selected.

Yours sincerely,



M. Sulman Baig
Procurement & Logistics Manager
MUSLIM AID
Plot # 1, First Floor, Executive Business Centre,
Main Double Road, FECHS E-11/2, Islamabad

ANNEXURE-A (BOQ)

Option 1: BOQ for Smart Houses with a structure is made of brick masonry with steel iron girders, bamboo poles, and a Red/Mat/Pattle roof

(DETAIL SPECIFICATION OF CIVIL CONSTRUCTION WORK AND MATERIAL SPECIFICATION)

Sr #	DESCRIPTION/DETAIL SPECIFICATION	UNIT	QTY	UNIT RATE	TOTAL AMOUNT
1	PCC 1:4:8: The work includes providing and laying PCC (Plain Cement Concrete) lean in a 1:4:8 mix ratio, utilizing SR-grade cement (Elephant/Lucky, 10,000 PSI), fine hill sand, and 1/2" crush-free from debris. The PCC will be laid in accordance with standard construction practices and as per the attached approved design. A curing period of 7 days will be maintained to ensure proper setting and durability. The scope of work encompasses both labor and material costs, ensuring compliance with quality and technical specifications.	Cft	58.92		
2	Brick Work Ratio- 1:6: The work involves constructing brick masonry using a cement-sand mortar (CSM) mix in a 1:6 ratio, utilizing first-class bricks and fine hill sand. The masonry will be executed for internal and external walls, including substructure, superstructure, boundary walls, parapet walls on roofs, and pathways, adhering to the provided technical specifications. A curing period of 7 days will be ensured to achieve optimal strength and durability. All work will be carried out in accordance with the approved standards, ensuring high-quality construction and finishing.	Cft	1,340.23		
3	PCC Flooring & DPC 1:2:4: The work entails providing and laying Plain Cement Concrete (PCC) in panels with a 1:2:4 mix ratio, consisting of high-quality Elephant/Lucky cement (10,000 PSI), fine hill sand, and 1/2" crush free from debris. The PCC will be laid following standard construction practices, with a curing period of 7 days to ensure durability and strength. The quantity required will align with the attached approved design. The scope includes all labor and material costs, ensuring compliance with specified quality standards and technical requirements.	Cft	163.03		
4	RCC without Steel Ratio-1:2:4: The work involves providing and laying Reinforced Cement Concrete (RCC) in a 1:2:4 mix, which includes cement, fine hill sand, and 1/2" crush free from debris, using high-quality Elephant/Lucky cement (10,000 PSI). Wooden shuttering will be used to form the structure, excluding the supply and fixing of steel reinforcement. The concrete will be cured for 7 days	Cft	48.48		

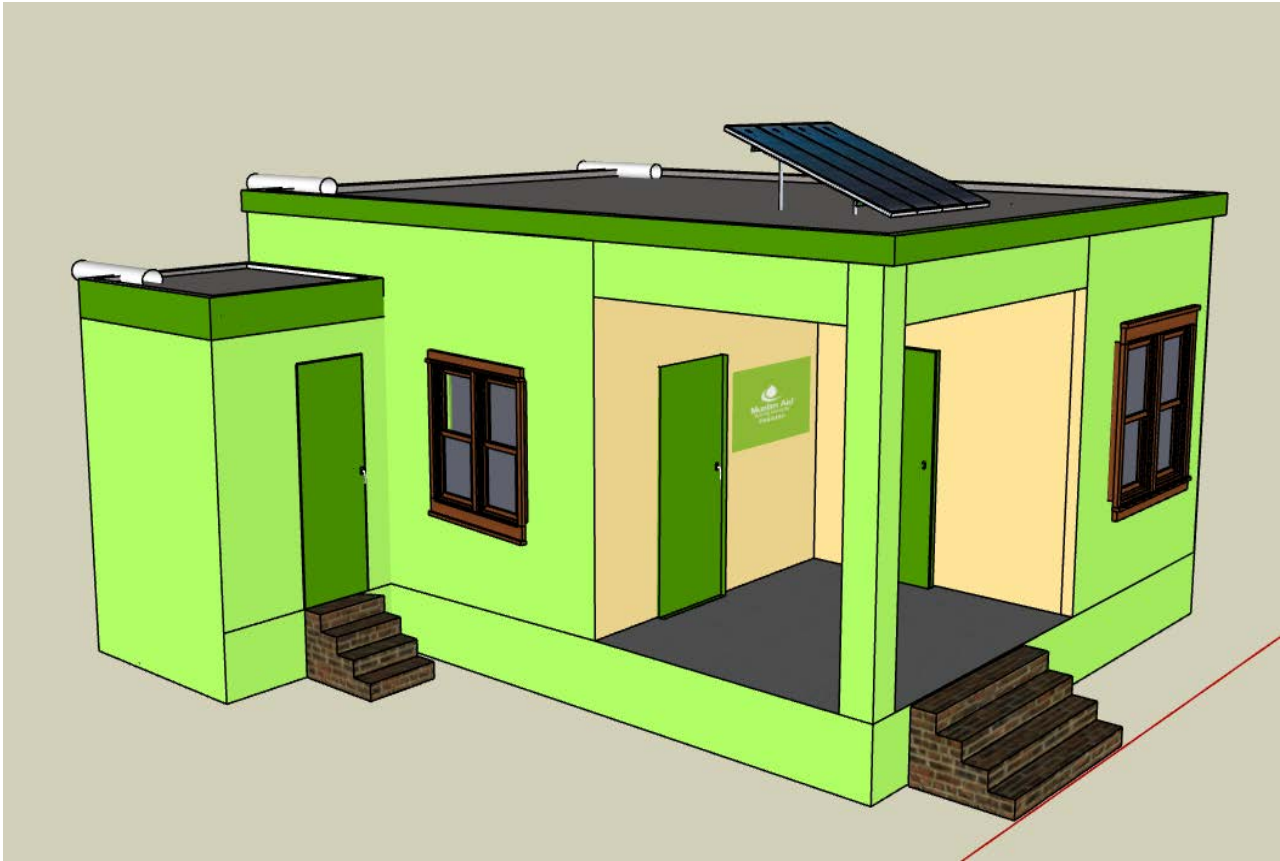
	as per standard construction practices to ensure optimal strength and durability. The quantity required will be as per the attached approved design, and the scope includes all labor and material costs, ensuring adherence to quality and technical specifications.				
5	<u>Steel 40 Grade:</u> The scope of work includes the supply and fixing of 3/8" diameter, Grade 40 deformed steel bars (Amreli or equivalent), conforming to the specified technical standards. This includes all necessary processes such as cutting, binding, fixing, and fabricating the bars to meet the design and structural requirements outlined in the technical specifications. All work will ensure precise adherence to quality and safety standards for durability and performance.	KG	113.80		
6	<u>Steel Door, and Window:</u> The work includes the supply and fixing of steel doors and windows from 18 SWG steel sheets and 14 SWG angle iron (1.5" x 1.5" x 3/8") for framing. The steel doors will be installed with two-leaf openings for the room door, measuring 3.5' x 7', and one-leaf openings for the kitchen door (2.5' x 7') and toilet door (2.5' x 6'). Each door will be fitted with at least three large-sized hinges and a proper locking system operable from both sides, adhering to the attached drawings and technical specifications. The steel windows will consist of two panels, each measuring 4' x 4', and will include wire mesh for additional security. All installations will be executed as per the specified standards and design requirements to ensure durability and functionality.	Sft	105.00		
7	<u>Plaster Ratio-1:4:</u> The work involves applying 1/2" thick plaster using a cement-sand mortar (CSM) mix in a ratio of 1:4, adhering to standard practices. The plaster will undergo a curing process for 7 days to ensure durability and strength. The quantity required will be as per the attached approved design, with materials including high-quality cement (Elephant/Lucky brand, 10,000 PSI) and fine hill sand free from debris. The scope includes both labor and material costs, ensuring the work meets specified quality standards and technical requirements.	Sft	2,412.01		
8	<u>Matt Finish and Wall Putty:</u> The work involves applying vinyl emulsion distemper for interior surfaces, consisting of three coats to ensure a smooth and uniform finish. The process includes surface preparation with proper filling and surfacing to achieve the desired quality. Only high-quality brands such as ICI Diamond, Brighton, or equivalent, as approved by the engineer, will be used. All work will adhere to the specified standards, ensuring a durable and aesthetically pleasing finish.	Sft	1,247.21		

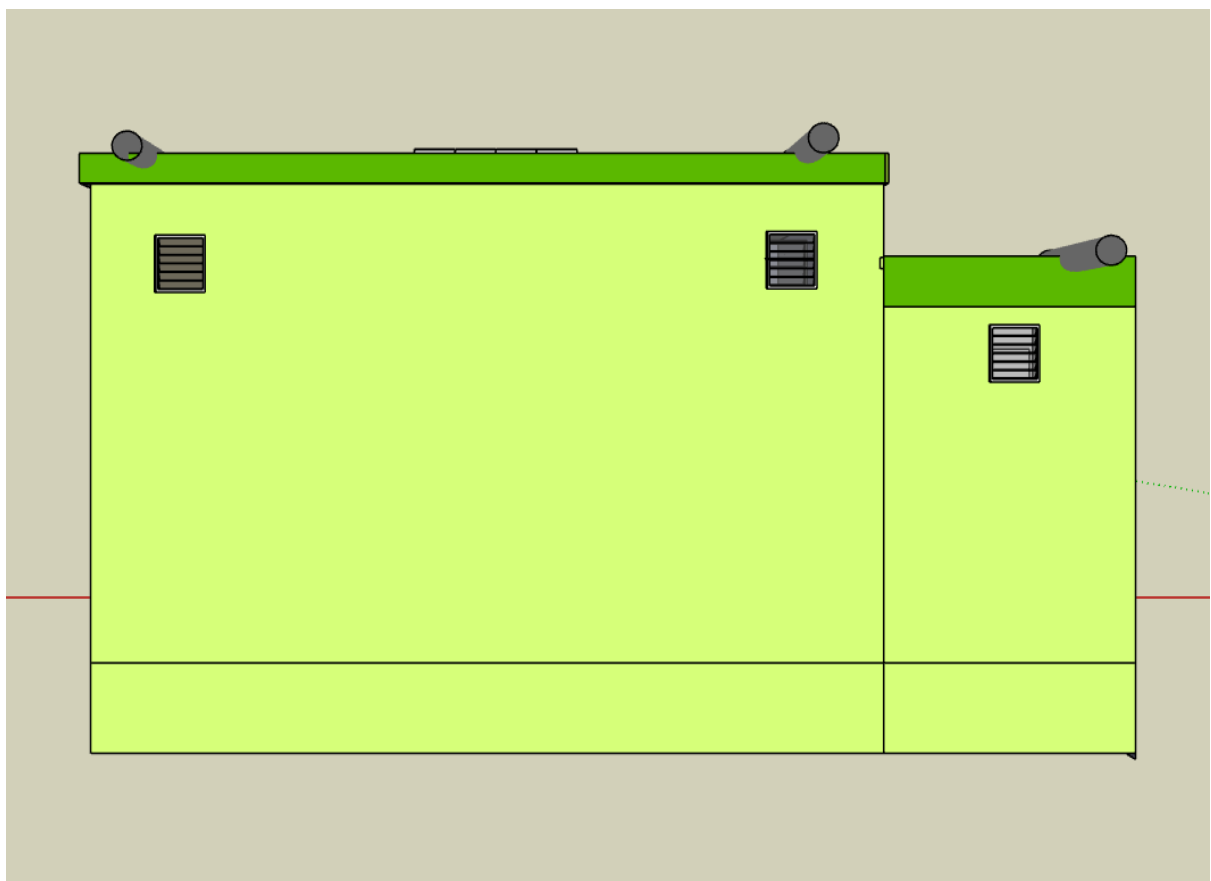
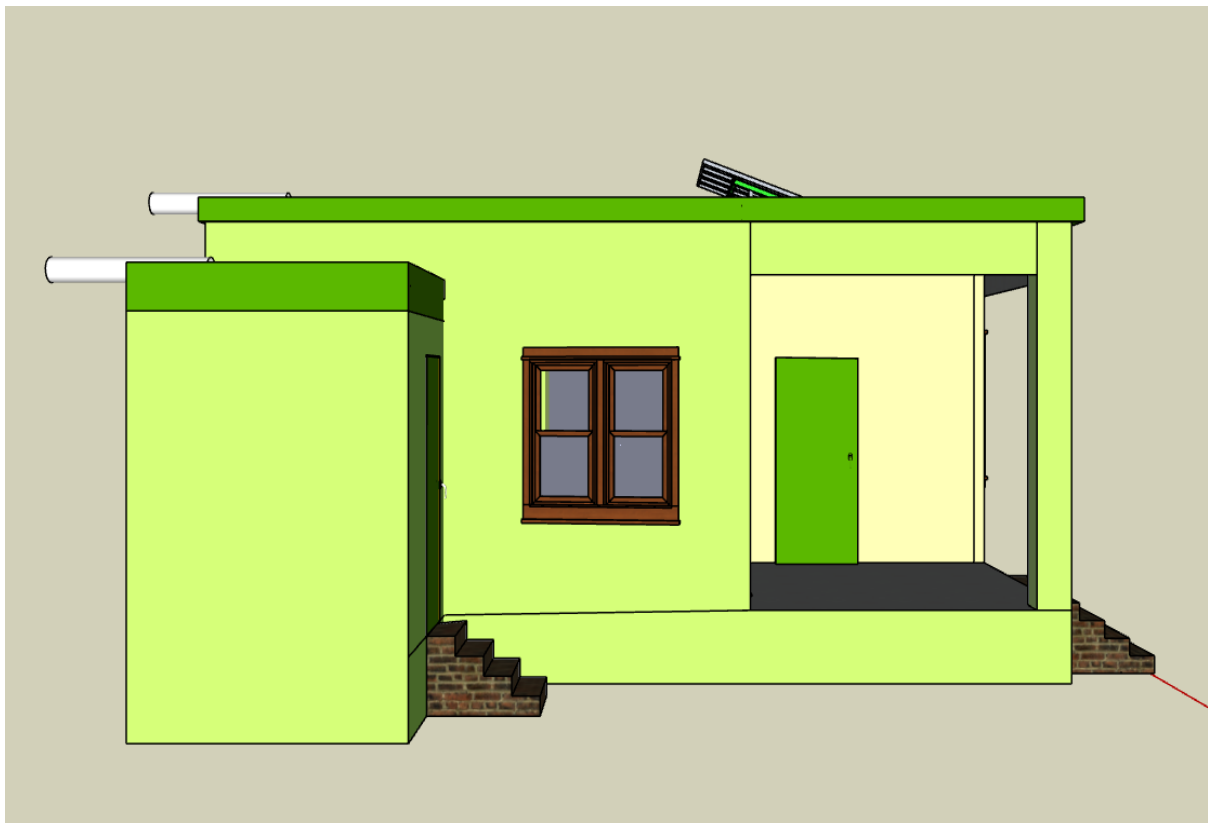
9	<u>Weather Shield External:</u> The work entails applying weather-resistant paint for exterior surfaces, consisting of three coats to ensure a durable and aesthetically pleasing finish. The process includes thorough surface preparation with proper filling and surfacing to achieve the desired quality and longevity. Only high-quality products such as ICI, Diamond, Brighto or equivalent, as approved by the engineer, will be used. All work will comply with the specified standards, ensuring a finish that withstands environmental conditions and maintains its appearance over time.	Sft	1,164.80		
10	<u>Paint for Doors and window:</u> Oil paint for steelwork (03 door, 03 windows both side) work surface with 3 coats including filling & surfacing, approved by the engineer. (ICI, Dimond, Brighto or equaling)	Sft	210.00		
11	<u>Steel Iron Girder:</u> The work involves applying oil paint to steel surfaces, including three doors and three windows, on both sides. The process includes surface preparation with proper filling and surfacing to ensure a smooth and durable finish. Three coats of high-quality oil paint will be applied to provide long-lasting protection and a neat appearance. Only approved brands such as ICI Diamond, Brighto or equivalent, as authorized by the engineer, will be used. All work will be carried out according to the specified standards, ensuring a high-quality, resilient finish suitable for steel surfaces exposed to various conditions.	Rft	31.00		
12	<u>Bamboos Pools:</u> The work involves providing and fixing high-quality dry wooden bamboos for the DRR Resilient Shelter roof, with each bamboo measuring 15.5' in length and a minimum diameter of 3" at the smaller end. The bamboos must be well-seasoned, free of sharp edges, straight, and fully burnt as per the approved sample. Additionally, the bamboos will be treated with two coats of light green paint to ensure protection and aesthetic appeal. All materials and work will conform to the approved specifications, ensuring the durability and resilience of the shelter roof.	Rft	368.50		
13	<u>Red/Mat/Pattle:</u> The work involves providing and fixing red or matte pattle (chick made of reed), closely woven with 4/8" diameter sticks. The reeds will be properly threaded and sieved to ensure a neat and secure installation for the smart houses. The material will be selected to meet the required quality standards, ensuring durability and effective performance for the intended use. All work will be executed with attention to detail, ensuring a strong and visually appealing finish as per the specified requirements.	Sft	407.75		

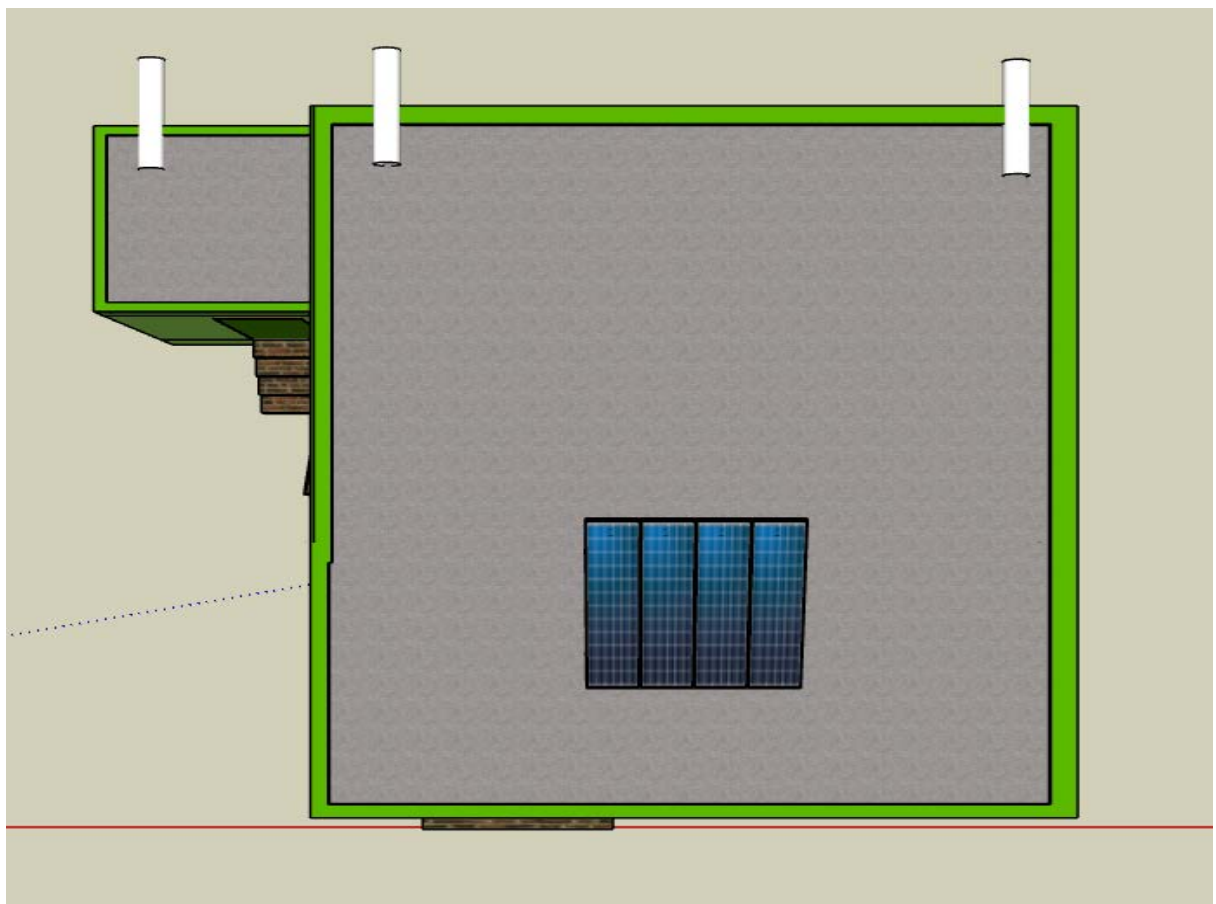
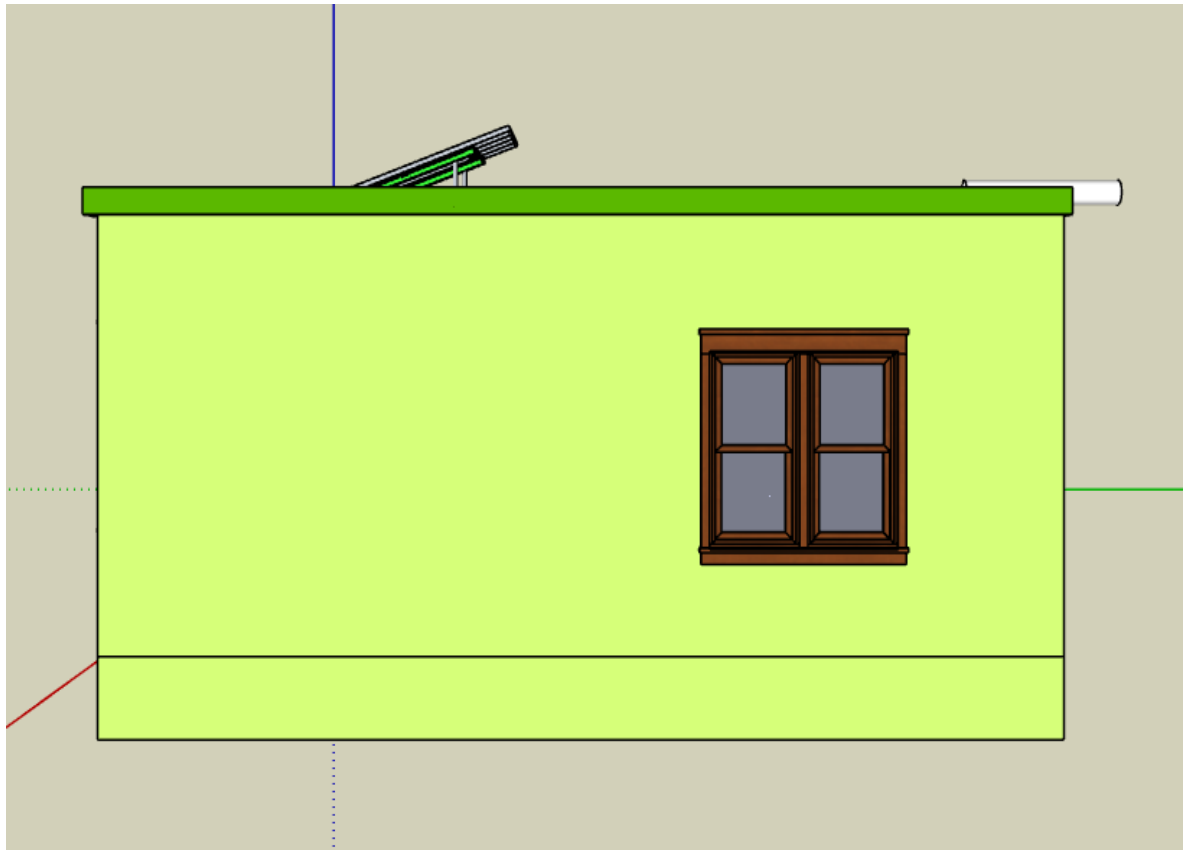
14	<u>Plastic Sheet:</u> The work involves providing and installing high-quality plastic polythene sheets for the room, veranda roof, and toilet areas. The sheets will be double-folded and made of fine-grained material to ensure durability and effective waterproofing. The polythene sheets will be selected for their strength, flexibility, and resistance to environmental factors, ensuring long-lasting protection. All materials used will meet the specified quality standards, ensuring that the sheets provide the necessary coverage and protection for the specified areas.	Sft	407.75		
15	<u>Indian WC:</u> The work involves providing and laying a medium-sized Indian WC (Master) including all necessary components such as the P-trap, L-bow 4", Coval, and T-joint. The installation will be carried out in full compliance with the technical specifications and approved by the engineer to ensure proper functionality and durability. All materials and fittings used will be of high quality, and the installation will be completed in a professional manner, meeting all required standards for performance and reliability.	Job	1.00		
16	<u>Steel Waste Mesh:</u> The work involves providing and laying a steel waste net for flooring, which includes the installation of a steel mesh (net) along with the required jali (grating). The steel net will be installed in the designated areas to ensure proper drainage and prevent blockages while offering structural support. The mesh will be made of durable steel material, ensuring strength and long-lasting performance. All installation work will be carried out according to the specified standards, with attention to detail, ensuring that the net and jali are securely fitted and meet the functional requirements.	Job	1.00		
17	<u>PVC Pipes:</u> The work involves the supply and fixing of 4" PVC (SDR-41) diameter pipes for waste and drainage systems, specifically designed for bathing water and rainwater from the roof. The pipes will be installed as per the approved standards, ensuring proper drainage and efficient flow. The PVC pipes used will be of high quality, resistant to wear and corrosion, and capable of withstanding the necessary pressure and environmental conditions. All installation work will be carried out with attention to detail and in compliance with the required specifications to ensure optimal functionality.	Rft	26.00		

18	<u>PCC Ventilators:</u> The work involves providing and fixing high-quality pre-cast PCC (Plain Cement Concrete) ventilators, each measuring 1.5' x 1.5'. The ventilators will be designed to ensure proper ventilation while being durable and resistant to environmental factors. They will be installed securely in the designated locations, following the specified standards and technical requirements. All materials used will meet the required quality standards, ensuring the long-lasting functionality and effectiveness of the ventilators. The installation will be completed with attention to detail and in accordance with the approved specifications.	Job	3.00		
19	<u>Visibility Plate:</u> The work involves providing and installing a visibility plate measuring 2' x 2', made from a durable plan sheet material. The plate will feature logos and text as per the design provided by MAP. The installation will be carried out with precision to ensure that the plate is securely fixed and clearly visible. All materials will meet the required quality standards, and the design will be executed as per the approved specifications. The installation process will ensure that the plate is functional, aesthetically pleasing, and compliant with the intended design requirements.	Job	1.00		
20	<u>Water Storage Tank:</u> Providing the Water Storage Tank double ply good quality (100 liters) with Tap & one Plastic Lota. Recommended and approved by field engineer	Job	1.00		
21	<u>Solar Panel:</u> The work involves providing and installing a 150-watt solar panel (brands such as Jinko, Invert, Khursheed, or equivalent quality), along with a range of additional components, including 01 AC/DC fan (Pak/GFC/Khursheed), 05 LED light holders, a 12-watt switch box (Philips/Osaka), a 50 AH dry battery (AGS/Osaka) with a steel stand, and a charger. The installation will also include a controller panel, complete electrical wiring, DC cable, piping work, and all necessary fitting accessories. All materials and components will meet the required quality standards as recommended by the engineer, ensuring the proper functionality and efficiency of the solar system. The work will be completed in full compliance with the technical specifications and requirements, ensuring a reliable and effective solar power setup.	Jobs	1.00		
Total Amount PKR for 01 Smart House as per design					
Amount of Sales Tax					
Total Amount PKR for 65 Smart House as per design including all Taxes					

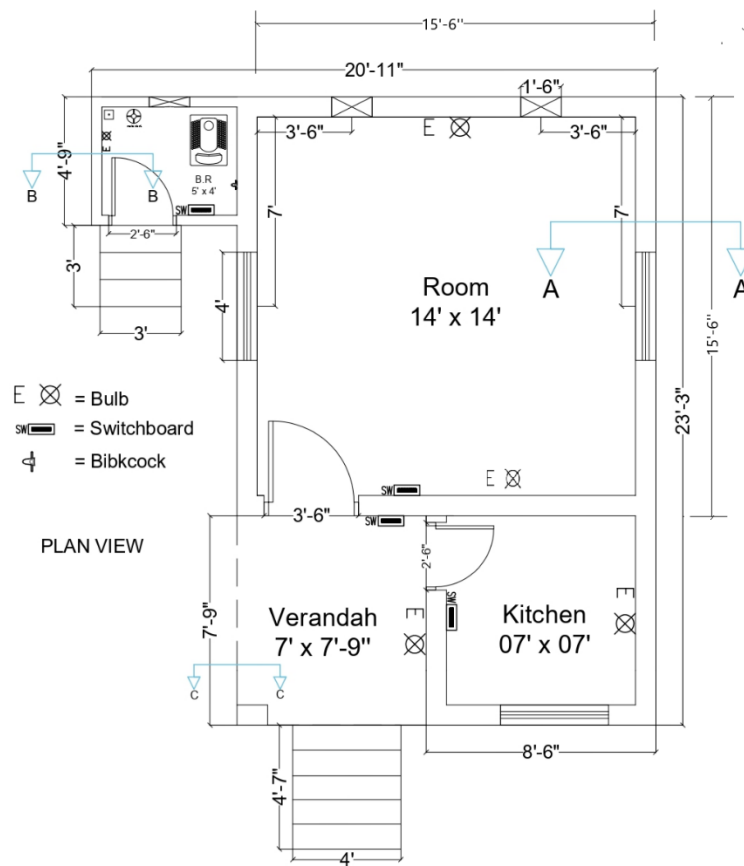
(Design and Drawing): Option 1



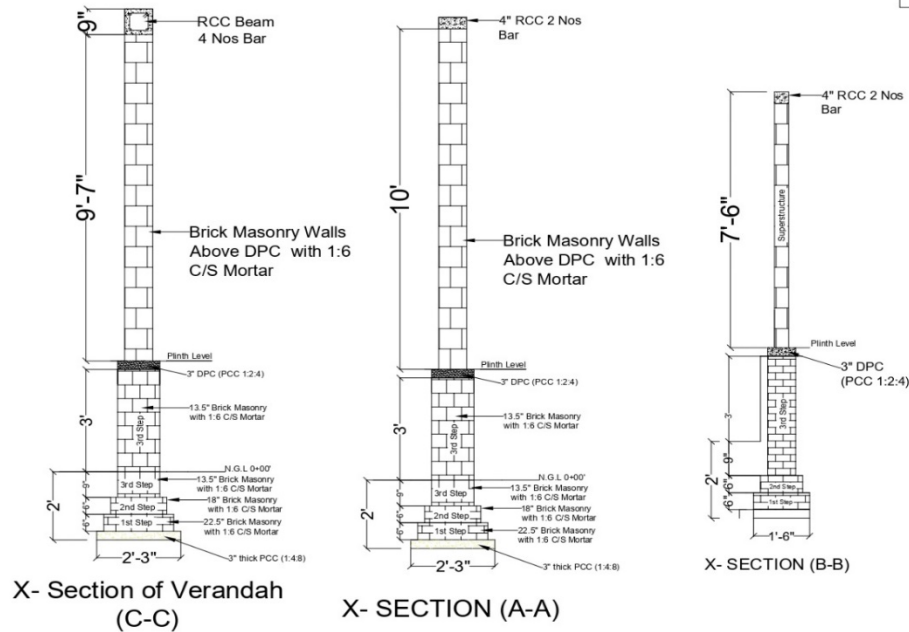




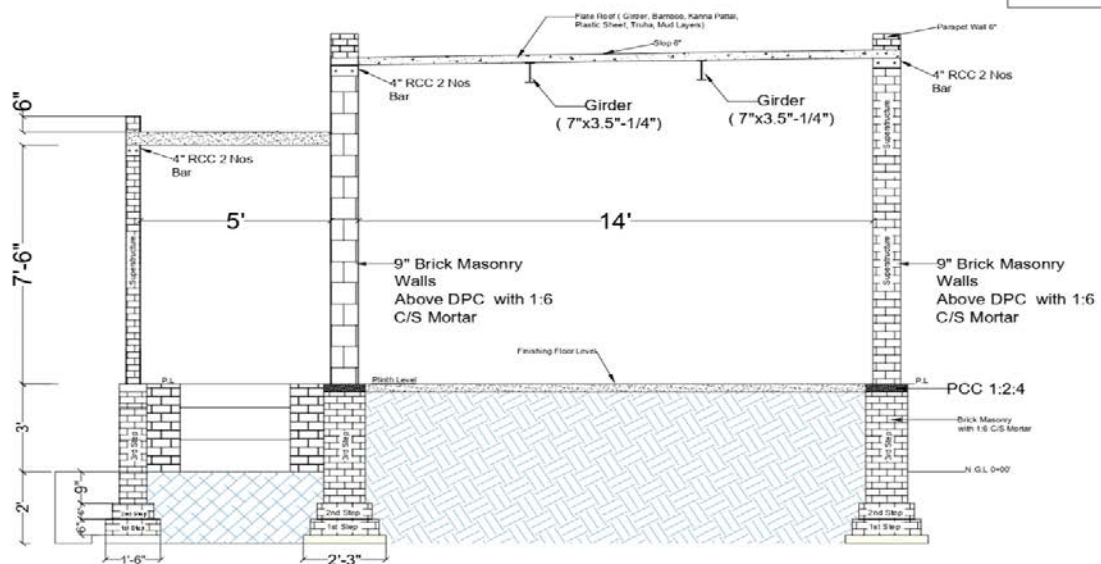
Muslim Aid Pakistan



Muslim Aid Pakistan

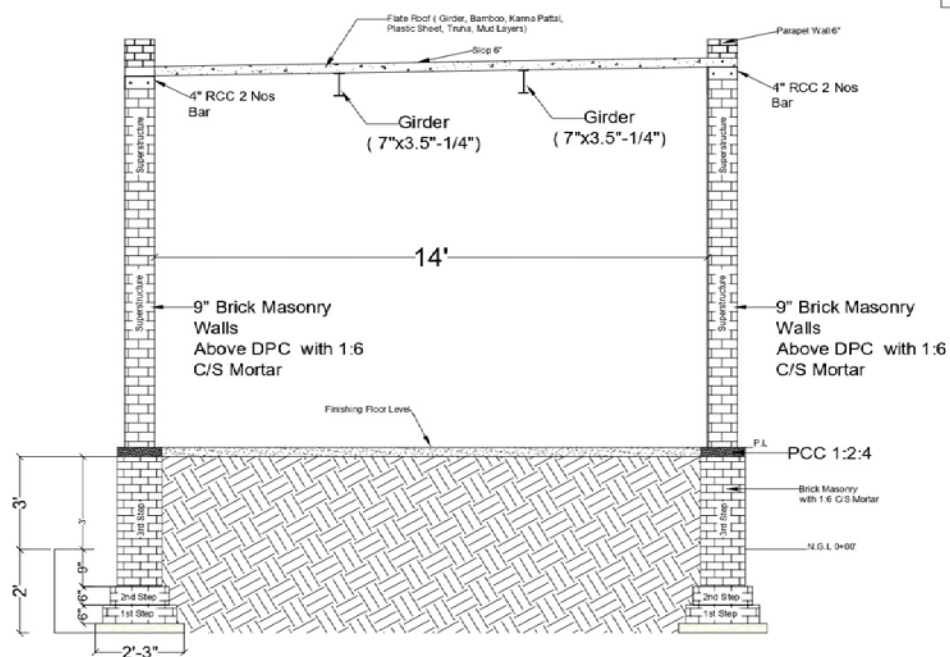


Muslim Aid Pakistan

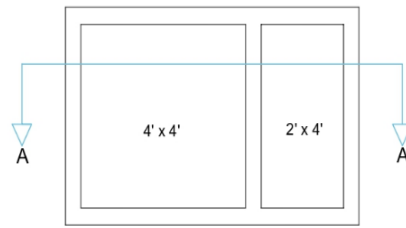


X-Section of Room and Bath

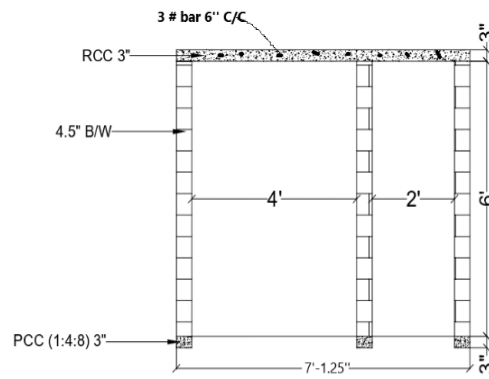
Muslim Aid Pakistan



X-Section of Room



Plan of Septic Tank



X-Section of (A-A)

Septic Tank

Option 2: BOQ for Smart Houses with the structure made of brick masonry with steel iron girders, Steel T-Iron, and a bricks tiles roof.

(DETAIL SPECIFICATION OF CIVIL CONSTRUCTION WORK AND MATERIAL SPECIFICATION)

Sr #	DESCRIPTION/DETAIL SPECIFICATION	UNIT	QTY	UNIT RATE	TOTAL AMOUNT
1	<u>PCC 1:4:8:</u> The work includes providing and laying PCC (Plain Cement Concrete) lean in a 1:4:8 mix ratio, utilizing SR-grade cement (Elephant/Lucky, 10,000 PSI), fine hill sand, and 1/2" crush-free from debris. The PCC will be laid in accordance with standard construction practices and as per the attached approved design. A curing period of 7 days will be maintained to ensure proper setting and durability. The scope of work encompasses both labor and material costs, ensuring compliance with quality and technical specifications.	Cft	58.92		
2	<u>Brick Work Ratio- 1:6:</u> The work involves constructing brick masonry using a cement-sand mortar (CSM) mix in a 1:6 ratio, utilizing first-class bricks and fine hill sand. The masonry will be executed for internal and external walls, including substructure, superstructure, boundary walls, parapet walls on roofs, and pathways, adhering to the provided technical specifications. A curing period of 7 days will be ensured to achieve optimal strength and durability. All work will be carried out in accordance with the approved standards, ensuring high-quality construction and finishing.	Cft	1,340.23		
3	<u>PCC Flooring & DPC 1:2:4:</u> The work entails providing and laying Plain Cement Concrete (PCC) in panels with a 1:2:4 mix ratio, consisting of high-quality Elephant/Lucky cement (10,000 PSI), fine hill sand, and 1/2" crush free from debris. The PCC will be laid following standard construction practices, with a curing period of 7 days to ensure durability and strength. The quantity required will align with the attached approved design. The scope includes all labor and material costs, ensuring compliance with specified quality standards and technical requirements.	Cft	163.03		
4	<u>RCC without Steel Ratio-1:2:4:</u> The work involves providing and laying Reinforced Cement Concrete (RCC) in a 1:2:4 mix, which includes cement, fine hill sand, and 1/2" crush free from debris, using high-quality Elephant/Lucky cement (10,000 PSI). Wooden shuttering will be used to form the structure, excluding the supply and fixing of steel reinforcement. The concrete will be cured for 7 days as per standard construction practices to ensure optimal strength and durability. The quantity required will be as per the attached	Cft	48.48		

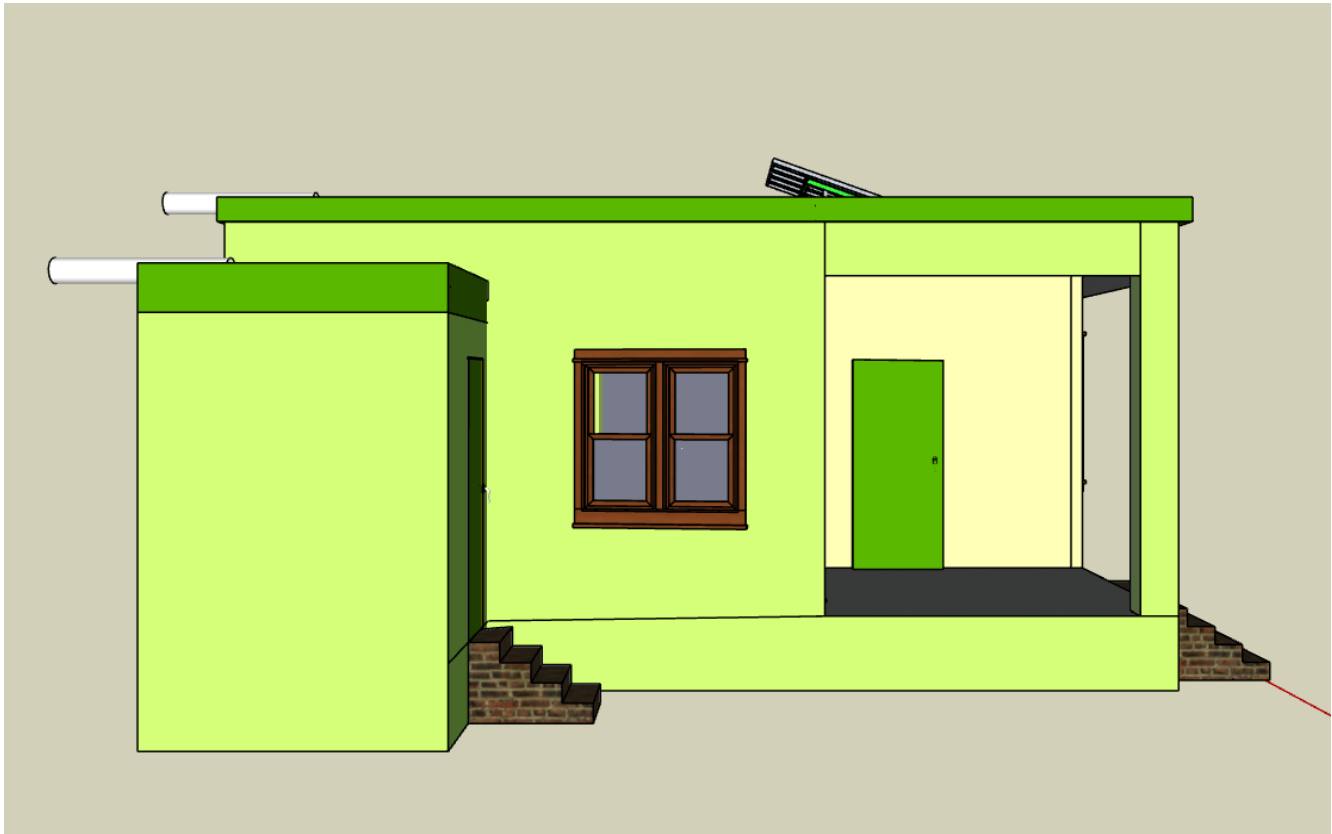
	approved design, and the scope includes all labor and material costs, ensuring adherence to quality and technical specifications.				
5	Steel 40 Grade: The scope of work includes the supply and fixing of 3/8" diameter, Grade 40 deformed steel bars (Amreli or equivalent), conforming to the specified technical standards. This includes all necessary processes such as cutting, binding, fixing, and fabricating the bars to meet the design and structural requirements outlined in the technical specifications. All work will ensure precise adherence to quality and safety standards for durability and performance.	KG	113.80		
6	Steel Door, and Window: The work includes the supply and fixing of steel doors and windows from 18 SWG steel sheets and 14 SWG angle iron (1.5" x 1.5" x 3/8") for framing. The steel doors will be installed with two-leaf openings for the room door, measuring 3.5' x 7', and one-leaf openings for the kitchen door (2.5' x 7') and toilet door (2.5' x 6'). Each door will be fitted with at least three large-sized hinges and a proper locking system operable from both sides, adhering to the attached drawings and technical specifications. The steel windows will consist of two panels, each measuring 4' x 4', and will include wire mesh for additional security. All installations will be executed as per the specified standards and design requirements to ensure durability and functionality.	Sft	105.00		
7	Plaster Ratio-1:4: The work involves applying 1/2" thick plaster using a cement-sand mortar (CSM) mix in a ratio of 1:4, adhering to standard practices. The plaster will undergo a curing process for 7 days to ensure durability and strength. The quantity required will be as per the attached approved design, with materials including high-quality cement (Elephant/Lucky brand, 10,000 PSI) and fine hill sand free from debris. The scope includes both labor and material costs, ensuring the work meets specified quality standards and technical requirements.	Sft	2,412.01		
8	Matt Finish and Wall Putty: The work involves applying vinyl emulsion distemper for interior surfaces, consisting of three coats to ensure a smooth and uniform finish. The process includes surface preparation with proper filling and surfacing to achieve the desired quality. Only high-quality brands such as ICI Diamond, Brighton, or equivalent, as approved by the engineer, will be used. All work will adhere to the specified standards, ensuring a durable and aesthetically pleasing finish.	Sft	1,247.21		

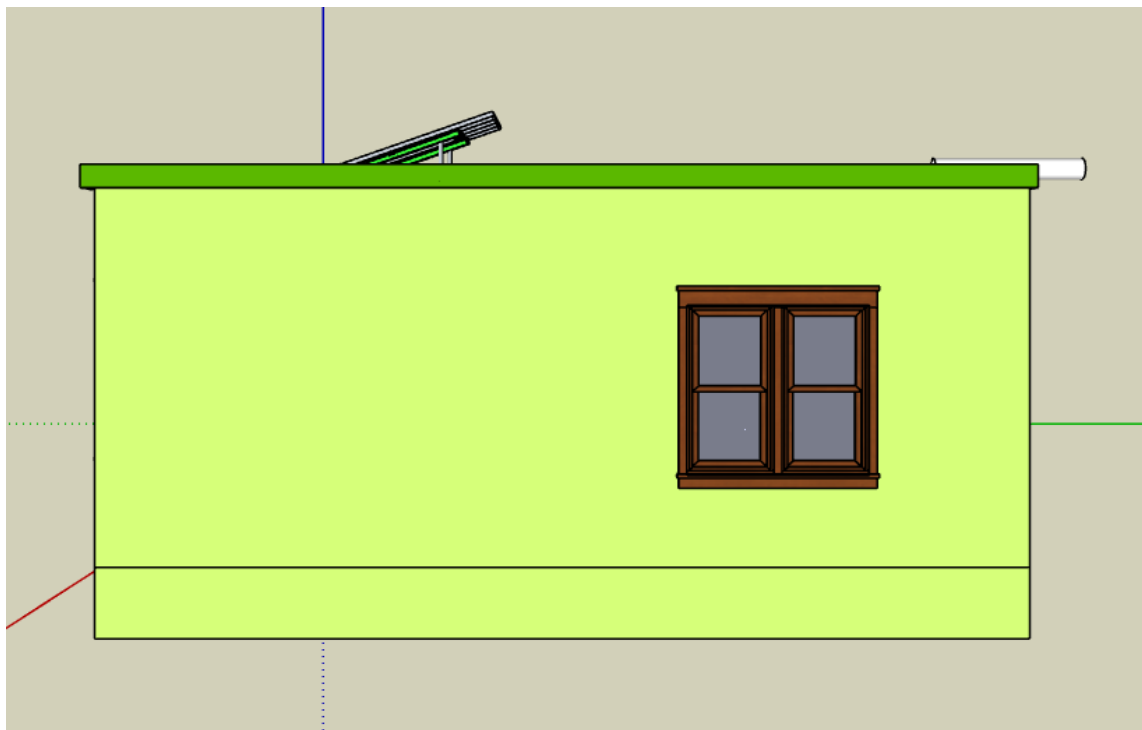
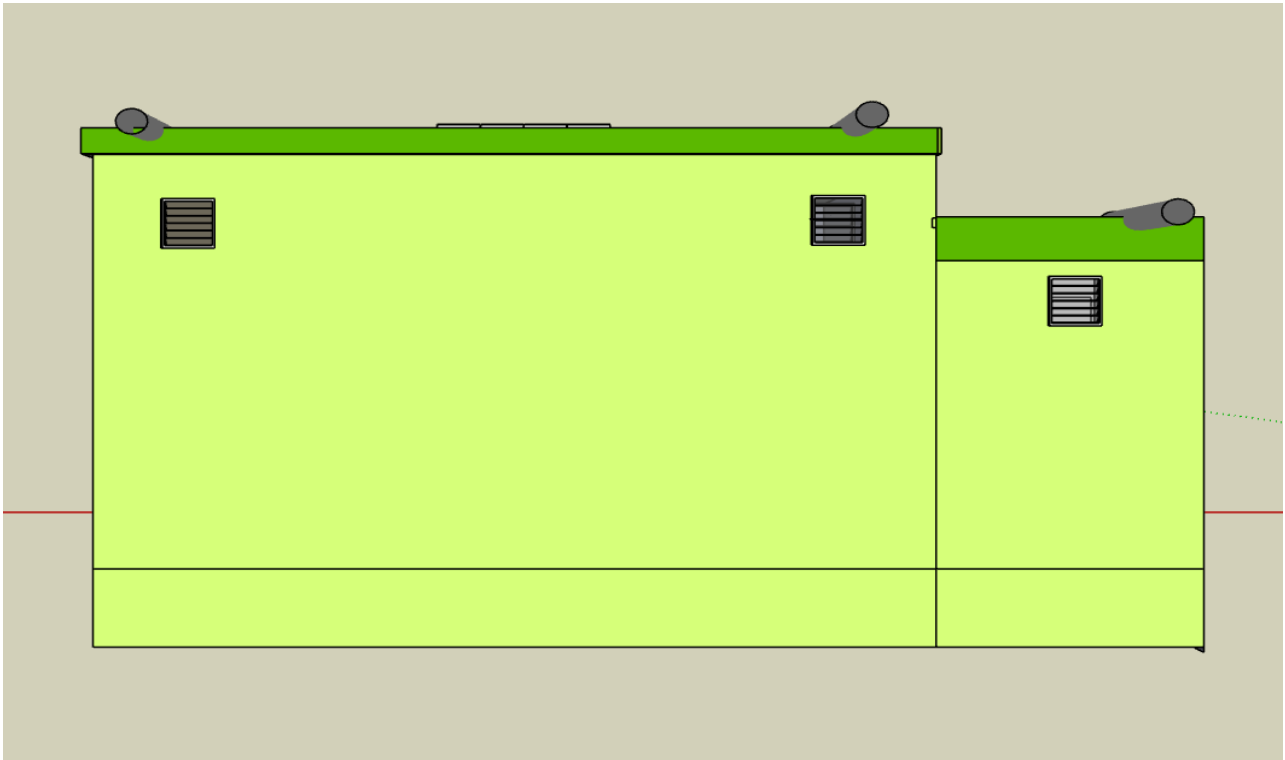
9	<u>Weather Shield External:</u> The work entails applying weather-resistant paint for exterior surfaces, consisting of three coats to ensure a durable and aesthetically pleasing finish. The process includes thorough surface preparation with proper filling and surfacing to achieve the desired quality and longevity. Only high-quality products such as ICI, Diamond, Brighto or equivalent, as approved by the engineer, will be used. All work will comply with the specified standards, ensuring a finish that withstands environmental conditions and maintains its appearance over time.	Sft	1,164.80		
10	<u>Paint for Doors and window:</u> Oil paint for steelwork (03 door, 03 windows both side) work surface with 3 coats including filling & surfacing, approved by the engineer. (ICI, Dimond, Brighto or equaling)	Sft	210.00		
11	<u>Steel Iron Girder:</u> The work involves applying oil paint to steel surfaces, including three doors and three windows, on both sides. The process includes surface preparation with proper filling and surfacing to ensure a smooth and durable finish. Three coats of high-quality oil paint will be applied to provide long-lasting protection and a neat appearance. Only approved brands such as ICI Diamond, Brighto or equivalent, as authorized by the engineer, will be used. All work will be carried out according to the specified standards, ensuring a high-quality, resilient finish suitable for steel surfaces exposed to various conditions.	Rft	31.00		
12	<u>T-Iron:</u> Providing and laying T-iron on the roof with a weight of 800 grams per running foot, bottom size 50 mm, and thickness 5 mm, sourced from Pak Steel, Mughal Steel, or Ittfaq Steel. The material must be coated with red oxide primer before applying paint to ensure durability and corrosion resistance	Rft	366.00		
13	<u>Bricks tiles:</u> Providing roof brick tiles of Class A quality, measuring 1' x 6" and 40mm thick, made from 100% well-burnt local bricks. The tiles must be properly burnt, well-shaped, and free from cracks or defects to ensure durability and uniformity.	Sft	386.50		
14	<u>Plastic Sheet:</u> The work involves providing and installing high-quality plastic polythene sheets for the room, veranda roof, and toilet areas. The sheets will be double-folded and made of fine-grained material to ensure durability and effective waterproofing. The polythene sheets will be selected for their strength, flexibility, and resistance to environmental factors, ensuring long-lasting	Sft	407.75		

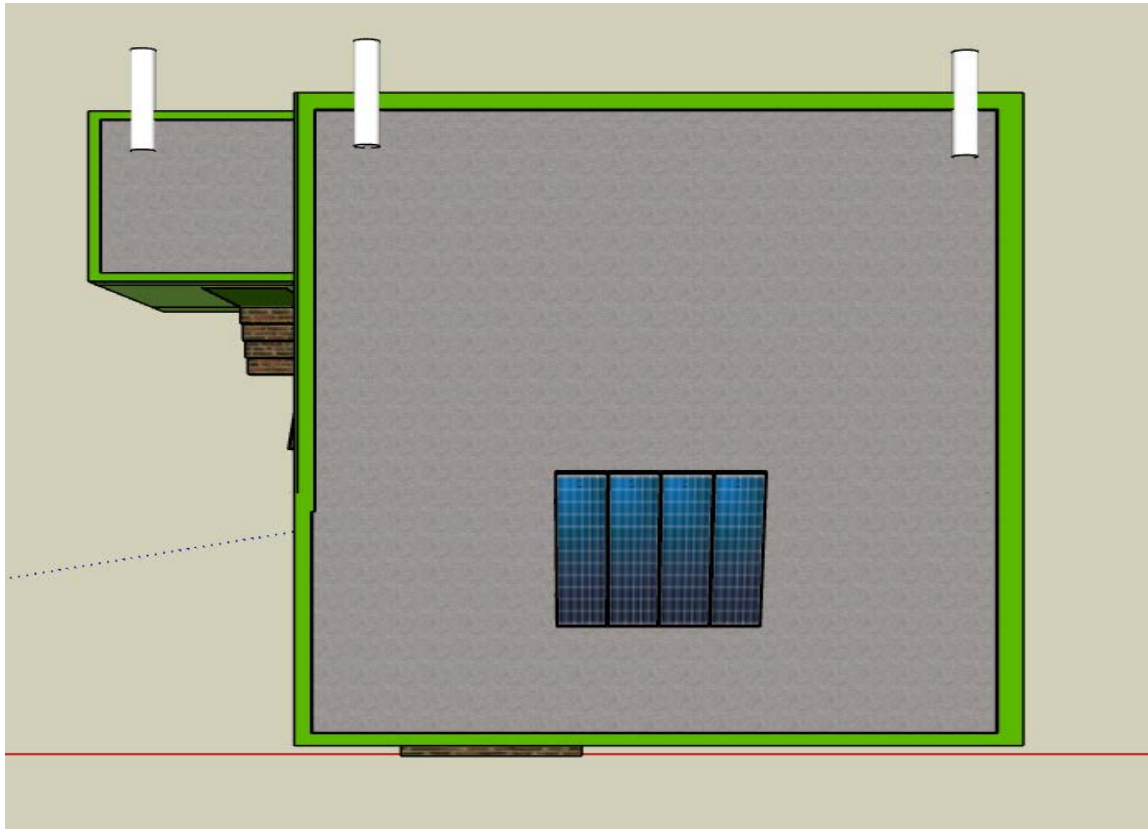
	protection. All materials used will meet the specified quality standards, ensuring that the sheets provide the necessary coverage and protection for the specified areas.				
15	<u>Indian WC:</u> The work involves providing and laying a medium-sized Indian WC (Master) including all necessary components such as the P-trap, L-bow 4", Coval, and T-joint. The installation will be carried out in full compliance with the technical specifications and approved by the engineer to ensure proper functionality and durability. All materials and fittings used will be of high quality, and the installation will be completed in a professional manner, meeting all required standards for performance and reliability.	Job	1.00		
16	<u>Steel Waste Mesh:</u> The work involves providing and laying a steel waste net for flooring, which includes the installation of a steel mesh (net) along with the required jali (grating). The steel net will be installed in the designated areas to ensure proper drainage and prevent blockages while offering structural support. The mesh will be made of durable steel material, ensuring strength and long-lasting performance. All installation work will be carried out according to the specified standards, with attention to detail, ensuring that the net and jali are securely fitted and meet the functional requirements	Job	1.00		
17	<u>PVC Pipes:</u> The work involves the supply and fixing of 4" PVC (SDR-41) diameter pipes for waste and drainage systems, specifically designed for bathing water and rainwater from the roof. The pipes will be installed as per the approved standards, ensuring proper drainage and efficient flow. The PVC pipes used will be of high quality, resistant to wear and corrosion, and capable of withstanding the necessary pressure and environmental conditions. All installation work will be carried out with attention to detail and in compliance with the required specifications to ensure optimal functionality.	Rft	26.00		
18	<u>PCC Ventilators:</u> The work involves providing and fixing high-quality pre-cast PCC (Plain Cement Concrete) ventilators, each measuring 1.5' x 1.5'. The ventilators will be designed to ensure proper ventilation while being durable and resistant to environmental factors. They will be installed securely in the designated locations, following the specified standards and technical requirements. All materials used will meet the required quality standards, ensuring the long-lasting functionality and effectiveness of the	Job	3.00		

	ventilators. The installation will be completed with attention to detail and in accordance with the approved specifications.				
19	Visibility Plate: The work involves providing and installing a visibility plate measuring 2' x 2', made from a durable plan sheet material. The plate will feature logos and text as per the design provided by MAP. The installation will be carried out with precision to ensure that the plate is securely fixed and clearly visible. All materials will meet the required quality standards, and the design will be executed as per the approved specifications. The installation process will ensure that the plate is functional, aesthetically pleasing, and compliant with the intended design requirements.	Job	1.00		
20	Water Storage Tank: Providing the Water Storage Tank double ply good quality (100 litters) with Tap & one Plastic Lota. Recommended and approved by field engineer	Job	1.00		
21	Solar Panel: The work involves providing and installing a 150-watt solar panel (brands such as Jinko, Invert, Khursheed, or equivalent quality), along with a range of additional components, including 01 AC/DC fan (Pak/GFC/Khursheed), 05 LED light holders, a 12-watt switch box (Philips/Osaka), a 50 AH dry battery (AGS/Osaka) with a steel stand, and a charger. The installation will also include a controller panel, complete electrical wiring, DC cable, piping work, and all necessary fitting accessories. All materials and components will meet the required quality standards as recommended by the engineer, ensuring the proper functionality and efficiency of the solar system. The work will be completed in full compliance with the technical specifications and requirements, ensuring a reliable and effective solar power setup.	Jobs	1.00		
Total Amount PKR for 01 Smart House as per design					
Amount of Sales Tax					
Total Amount PKR for 65 Smart House as per design including all Taxes					

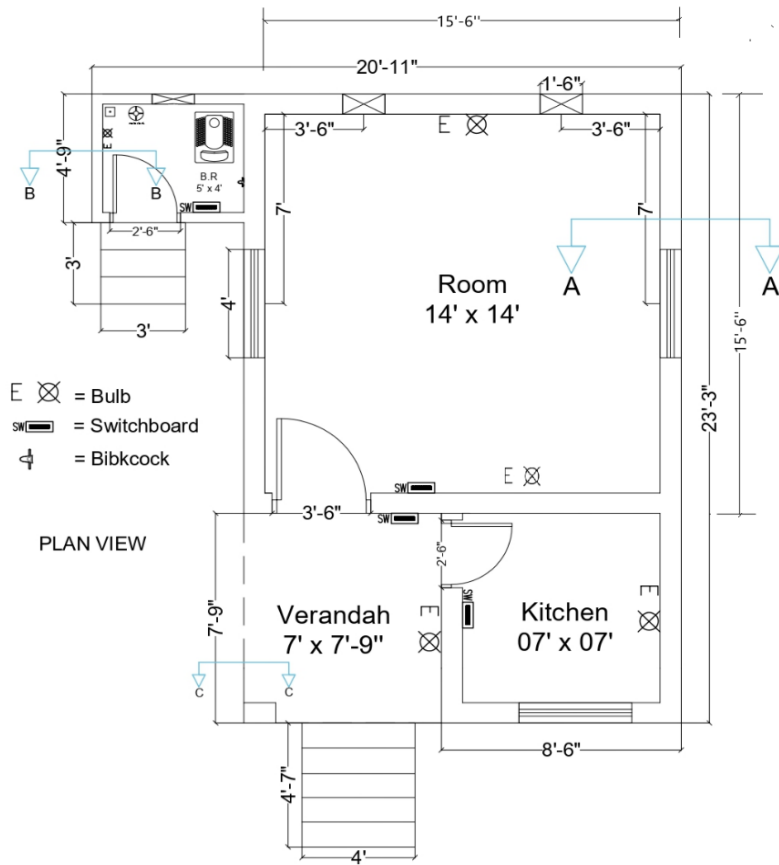
(Design and Drawing): Option 2



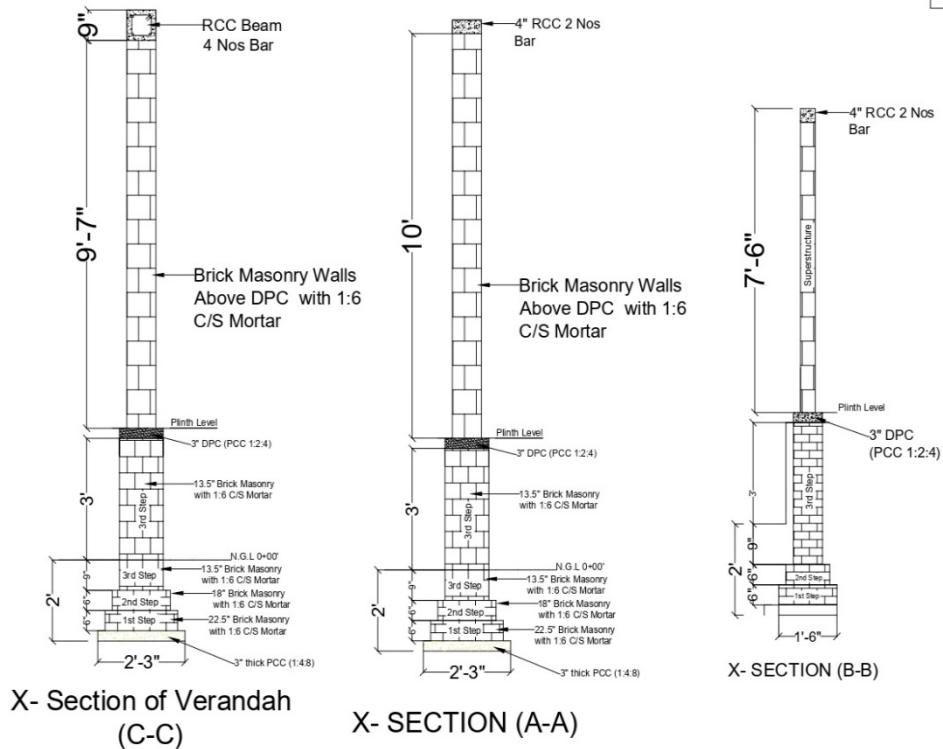




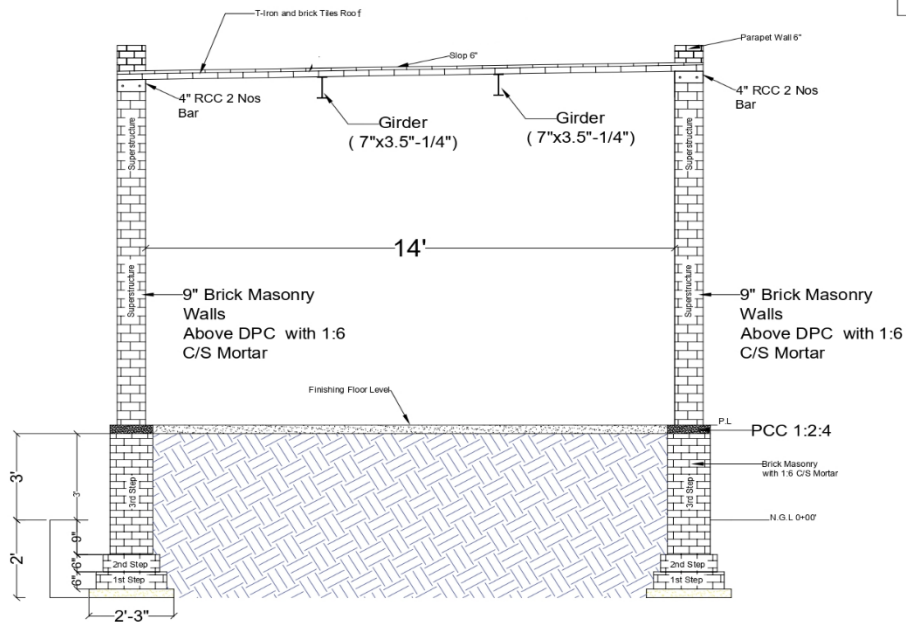
Muslim Aid Pakistan



Muslim Aid Pakistan

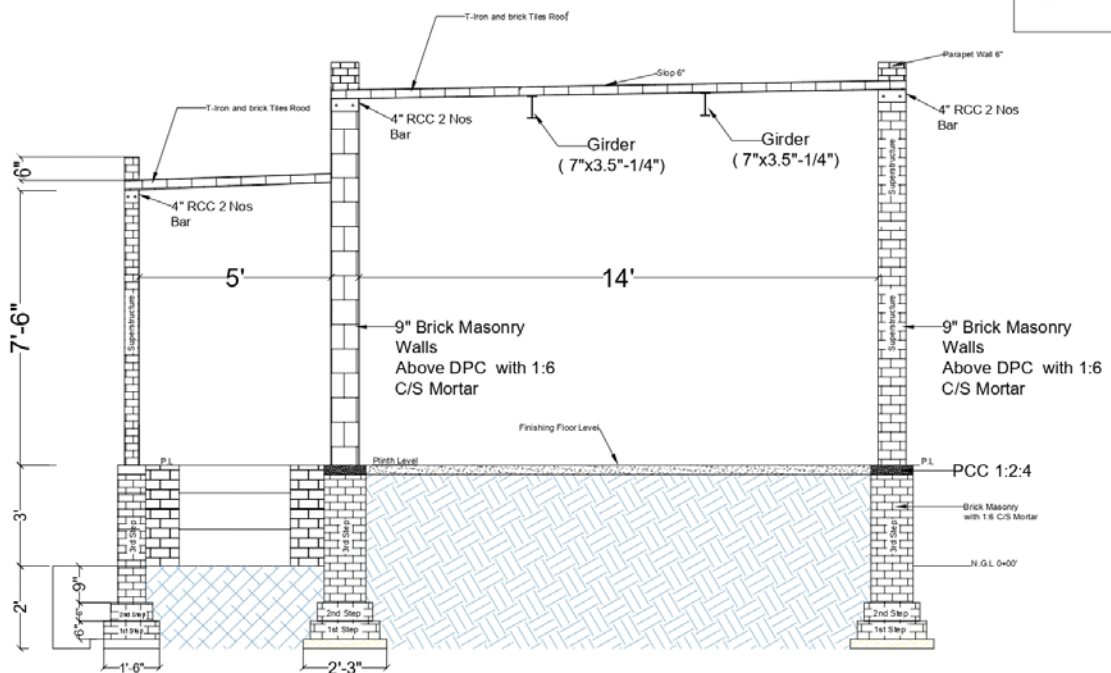


Muslim Aid Pakistan



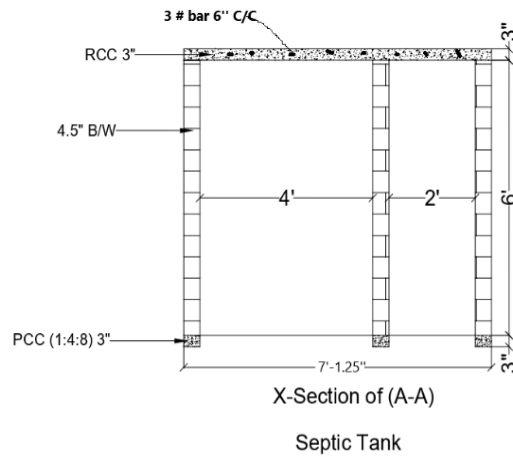
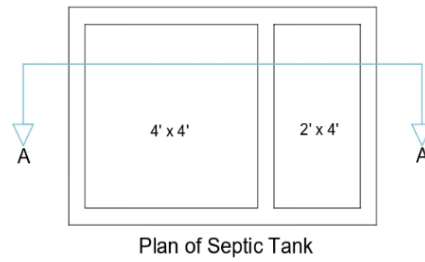
X-Section of Room

Muslim Aid Pakistan



X-Section of Room and Bath

Muslim Aid Pakistan



Contractor' Signatures & Seal _____

QUANTITY / ANY OTHER DISCOUNTS (PLEASE SPECIFY):

THE PROPOSED DISCOUNTS WILL BECOME AN INTEGRAL PART OF YOUR BID SUBMISSION

PAYMENT TERMS: ACCEPTANCE OF PAYMENT TERMS (I.E. 30 DAYS NET FROM RECEIPT OF DOCUMENTS)

YES: _____ NO: _____

BIDDERS NAME AND SIGNATURE: _____

ANNEXURE-B:

List of Targeted UCs for Construction of Smart Houses with Toilet, Verandah, and Kitchen)

S#	District	Tehsil	Union Council	Lot #	# Of Smart Houses
1	Mirpurkhas	Jhuddo	Mir Khuda Bux-2	02	65
2	Mirpurkhas	Jhuddo	Mir Allah Bachayo		

ANNEXURE-C

(General Terms and Conditions for Services for Construction of 65 Smart Houses in Mirpur Khas, Sindh (LOT-2)

1. ACCEPTANCE OF THE PURCHASE ORDER

This Purchase Order may only be accepted by the supplier/Contractor signing and returning an acknowledgment copy of it or by timely delivery of the **Construction of 65 Smart Houses in Mirpur Khas, Sindh (LOT-2)** in accordance with the terms of the Purchase Order/Contract as herein specified. Acceptance of this Purchase Order shall affect a contract between the Parties under which the rights and Obligations of the parties shall be governed solely by the terms and conditions of the purchase order including these General Conditions. No additional or inconsistent provision proposed by the supplier /Contractor shall bind **Muslim Aid (MAP)** unless agreed to in writing by a duly authorized **Muslim Aid (MAP)** official.

2. LEGAL STATUS

The supplier / Contractor shall be considered as having the legal status of an independent contractor vis-à-vis **Muslim Aid (MAP)**. The Supplier / Contractor, its personnel, and sub-contractors shall not be considered in any respect as being the employees of **Muslim Aid (MAP)**. The supplier / Contractor shall be fully responsible for all work and services performed by its employees and for all acts and omissions of such employees.

3. SOURCE OF INSTRUCTION

The supplier / Contractor shall neither seek nor accept instructions from any authority external to **Muslim Aid (MAP)** in connection with the performance under this contract. The Supplier / Contractor shall refrain from any action that may adversely affect **Muslim Aid (MAP)** and shall fulfill its commitments with the fullest regard to the interests of **Muslim Aid (MAP)**.

4. ANTI-PERSONNEL MINES

The supplier / Contractor guarantees that it is not engaged in the sale or manufacture, either directly or indirectly, of anti-personnel mines or any components produced primarily for the operation thereof. Any breach of this representation and warranty shall entitle **Muslim Aid (MAP)** to terminate this Purchase Order immediately upon notice to the supplier / Contractor, at no cost to **Muslim Aid (MAP)**.

5. CHILD LABOUR

The supplier / Contractor represents and warrants that neither it, nor any of its suppliers, is engaged in any practice inconsistent with the rights outlined in the Convention on the Rights of the Child, including Article 32 thereof, which, *inter alia*, requires that a child shall be protected from performing any work that is likely to be hazardous or to interfere with the child's education, or to be harmful to the child's health and physical, mental, spiritual, moral or social development. Any breach of this representation and warranty shall entitle **Muslim Aid (MAP)** to terminate this Purchase Order immediately upon to the supplier, at no cost to **Muslim Aid (MAP)**.

7. SUB-CONTRACTING

In the event the Supplier / Contractor require the services of a sub-contractor, the supplier / Contractor shall obtain the prior written approval of **Muslim Aid (MAP)** for all sub-contractors. The supplier / Contractor shall be fully responsible for all work and services performed by its sub-contractors and suppliers and for all acts and/or omissions of such sub-contractors and supplier and their personnel. The approval of **Muslim Aid (MAP)** of a sub-contractor shall not relieve the Supplier / Contractor of any of its obligations under this Purchase Order. The terms of any sub-contract shall be subject to and conform to the provision of this Order.

8. ASSIGNMENTS

The supplier / Contractor shall not assign, transfer, pledge, or make other disposition of this Order or any part thereof or of any of the supplier's / Contractor rights, claims, or obligations under this Order except with the prior written consent of **Initiative of Change (MAP)**.

9. OFFICIALS NOT TO BENEFIT

The supplier / Contractor represents and warrants that no official of Muslim Aid (MAP) has been, or shall be, offered by the Supplier / Contractor any direct or indirect benefit arising from this order or the award thereof. The supplier / Contractor agree that a breach of this provision is breach of an essential term of this Order.

10. ENCUMBRANCES/LIENS

The supplier / Contractor shall not cause or permit any lien, attachment or other encumbrance by any person or entity to be placed or to remain in any public office or with Muslim Aid (MAP) against any monies due or to become due for any work done or materials furnished under this contract, or by reason of any other claim or demand against the Supplier / Contractor.

11. EXPORT LICENCE

The order is subject to the obtaining of any export license or other government authorization that may be required. It shall be the responsibility of the Supplier / Contractor to obtain such license or authorization. Should the supplier / Contractor encounter difficulties in obtaining the required export license or governmental authorization, it shall immediately bring this to the attention of Muslim Aid (MAP). Muslim Aid (MAP) will, at its discretion, use its best endeavors to assist.

12. WARRANTY

The supplier / Contractor warrants the material, construction, including finishing under this Order conform to the specification of the Order and is free from damage and defects in workmanship or materials. This warranty is without prejudice to any further guarantees that the Supplier / Contractor provides to purchasers. Such guarantees shall apply to the construction subject to this Order.

13. REJECTION

Under the Order, Muslim Aid (MAP) shall have the right to reject the material or any part thereof if they do not conform to specifications.

14. INSPECTION

Muslim Aid (MAP) or its duly accredited representative shall have the right to inspect the material / Construction work ordered for under this Order at Supplier's stores, during manufacture, in the port or places of shipment, and the Supplier shall provide all facilities for such inspection.

15. OVERRIDING CLAUSE

In the event of any conflict or inconsistencies between these General Terms and Conditions for construction or any other document which forms part of the purchase these conditions shall prevail except where they have been amended (by specific reference to the relevant clause and paragraph of these Conditions) as provided for herein.

16. FORCE MAJEURE: OTHER CHANGES IN CONDITIONS

In the event of as soon as possible after the occurrence of any cause constituting force majeure, the Supplier shall give notice and full particulars in writing to Muslim Aid (MAP) of such occurrence or change if the Supplier / Contractor is hereby rendered unable.

Wholly or in part, to perform its obligations and meet its responsibilities under this Order. The Supplier / Contractor shall also notify Muslim Aid (MAP) of any other changes in conditions or the occurrence of any even which interferes or threatens to interfere with its performance of this purchase Order. On receipt of the notice required under this Article, Muslim Aid (MAP) shall take such action as, in its sole discretion; it considers to be appropriate or necessary in the circumstances, including the granting to the Supplier of a reasonable extension of time in which to perform its obligations under this Purchase Order.

If the Supplier / Contractor is rendered permanently unable, wholly or in part, by reason of force majeure to perform its obligations and meet its responsibilities under this Order, **Muslim Aid Pakistan (MAP)** shall have the right to suspend or terminate this Purchase Order on the same terms and conditions as are provided for in Article 18, "Termination", except that the period of notice shall be seven (7) days instead of thirty (30) days.

Force majeure as used in this provision means acts of God, war (whether declared or not), invasion, revolution, insurrection, or other acts of similar nature or force.

Notwithstanding anything to the contrary in this Order, the Supplier / Contractor recognizes that the work and services will

be performed under harsh or hostile conditions caused by civil unrest. Consequently, delays or failure to perform caused by events arising out of or in connection with, such civil unrest shall not, in and to itself, constitute force majeure under this Order.

17. DISPUTES – ARBITRATION

Amicable Settlement the Parties shall use their best efforts to settle amicably any dispute, controversy or claim arising out of this Order or the breach, termination or invalidity thereof. Where the parties wish to seek such an amicable settlement through conciliation, the conciliation shall take place.

18. TERMINATION OF PURCHASE ORDER

In the case of failure by the Supplier / Contractor to fulfill its obligations under the terms and conditions of the Order including but not limited to failure to obtain necessary export licenses, or failure or refusal to make delivery of all or part of the goods by the agreed delivery date or dates, **Muslim Aid Pakistan (MAP)** may, after giving the Supplier / Contractor reasonable notice to perform without prejudice to any other rights or remedies excess on or more of the following rights.

- Procure all or part of the goods from other sources, in which event **Muslim Aid Pakistan (MAP)** may hold the Supplier / Contractor responsible for any excess cost occasioned thereby.
- Refuse to accept delivery of all or part of the scope of work.
- Cancel this Order without any liability for termination charges to **Muslim Aid Pakistan (MAP)**.

Muslim Aid (MAP) may terminate forthwith this Order at any time should the mandate or the funding of **Muslim Aid Pakistan (MAP)** be curtailed or terminated in which case the Supplier / Contractor shall be reimbursed by **Muslim Aid Pakistan (MAP)** for all reasonable costs incurred by the Supplier / Contractor prior to receipt of the notice of termination.

19. INSOLVENCY AND BANKRUPTCY

Should the Supplier / Contractor become insolvent or should control of the Supplier / Contractor change by virtue of insolvency, **Muslim Aid Pakistan (MAP)** may without prejudice to any other rights and remedies, terminate this Order by giving the Supplier / Contractor written notice of termination.

Should the Supplier / Contractor be adjudged bankrupt or should the Supplier / Contractor make a general assignment for the benefit its creditors or should a receiver be appointed on account of the Supplier's / Contractor insolvency **Muslim Aid Pakistan (MAP)** may under the terms of this Order.

20. PAYMENT INSTRUCTIONS

Muslim Aid Pakistan (MAP) shall on the fulfillment of the Delivery Terms / Completion of work, unless otherwise provided in this Order make payment by cross cheque in the name of the company within thirty days of receipt of the Suppliers / Contractor invoice along with the work done certificate from the Muslim Aid Engineer and copies of any other documentation specified in the Order.

Payment against the invoice referred to above will reflect any discount shown under the payment terms of this Order, provided payment is made within the period required by such payment terms.

ANNEXURE-D (Vendor Registration Form and Instruction for completion of bid)

VENDOR REGISTRATION FORM – ANNEX D

Section 1: Company Details and General Information

1. Name of Company:

2. Street Address:

3. P.O. Box and Mailing Address:

Postal Code: City:

Country:

4. Tel: 5. Fax:

6. Email: 7. WWW Address:

8. Contact Name and Title:

9. Email:

10. Parent Company (Full legal / officially registered company name):

11. Subsidiaries, Associates - name, city, country (attach a List if necessary):

12. International Offices/Representation (Countries where the Company has local Offices/Representation):

13. Type of Business (Mark one only):

Corporate/ Limited: ☐ Partnership: ☐ Other (specify):

14. Nature of Business:

Manufacturer: ☐ Authorised Agent: ☐ Trader: ☐ Consulting Company: ☐ Other (specify):

15. Year Established: 16. Number of Full-time Employees:

17. Licence no./State where registered: 18. VAT No./Tax I.D.:

19. Technical Documents available in:

English ☐ French ☐ Spanish ☐ Russian ☐ Arabic ☐ Chinese ☐ Other (specify)

Construction of 65 Smart Houses in Mirpur Khas, Sindh (LOT-02)

20. Working Languages:

English ☐ French ☐ Spanish ☐ Russian ☐ Arabic ☐ Chinese ☐ Other (specify)

21. Bank Name:

22. Branch Name:

31. Routing Bank details (if applicable): full details to be provided as per above

Section 5: Official not to benefit

38. By signing this VRF, potential vendors confirm that they have read, understood and will comply with the MUSLIM AID policy on the “zero tolerance” that strictly prohibits the acceptance of any type of gift and/or hospitality by MUSLIM AID

Yes ☐ No ☐ Any breach of this clause may lead to the termination of all contracts your Company may

Name:

Functional Title:

Signature:

Date:

Please courier the completed BID documents to:

Procurement DepartmentMuslim Aid

Plot # 1, First Floor, Executive Business Centre,Main Double Road, FECHS,

E-11/2, Islamabad

INSTRUCTIONS FOR COMPLETION OF BID

The form should be typewritten in uppercase and completed clearly and accurately ensuring that all questions are answered. The numbers below correspond to item numbers on the registration form:

Section 1:

1. Full name of company.
2. Full street address.
3. Full mailing address (including P.O. Box, if any).
4. Telephone number, including correct country and area codes.
5. Fax number, including country and area codes.
6. Email address.
7. WWW Address.
8. Provide name of person (including title) or department to whom correspondence should be addressed.
9. Provide email address of contact person.
10. Full legal name of parent company, if any.
11. Please provide, on a separate sheet, if necessary, names and addresses of all subsidiaries & associates if any.
12. Please provide countries where the company has local offices or representation.
13. Please tick one box. If other; please specify.
14. Please tick one box. If other; please specify. If the company is a manufacturer of some products and a trader/agent of others which they do not manufacture, both boxes should be ticked.
15. Indicate the year in which the organization was established under the name shown in Item 1.
16. Indicate the total number of full-time personnel in the company.
17. Provide the license number under which the company is registered, or the State where it is registered.
18. Provide the VAT number or Tax I.D. of the company.
19. Please tick the boxes for which languages the company is able to provide technical documents. Please specify other languages.
20. Please tick the boxes for which languages the company is able to work in. Please specify other languages.

Section 2:

21. Full name of bank.
22. Name of branch.

23. Address where branch is located.
24. Telephone number, including correct country and area codes.
25. Fax number, including country and area codes.
26. Number of the company account.
27. Name in which the account is held (**important:** this should be the company name).
28. Currency of the account.
29. Swift code for the account.
International Bank Account Number (IBAN).
30. Should a routing be required for international payments, please provide full details of intermediate bank(s).

Section 3: (Documents to be submitted with Bids)

31. Pakistan Engineering Council Certificate (Validity)
32. NTN certificate
33. Statement of work
34. Company Key personal staff for this project
35. Work Plan for the construction of civil work
36. Construction Equipment list
37. Proof of Similar Project executed for last five years (List plus POs)
38. Project in Hand (List plus POs)
39. Financial Statement
40. Affidavit showing that the company is not involved in any litigation.
41. General Reputation (Provide the evidence of completion certificates of at least two previously completed projects of clients)

END