

DATE: 15th December, 2024

INVITATION TO BID NO. [MAP/MAUK/24/5297-35](#)

**Bids Required for Rehabilitation & Construction Works in Schools of
Loralai, Balochistan**

S #	Name of activity	Quantity (No)	Location
1.	Establishment of ECE Class Rooms	08	Loralai, Balochistan
2.	Installation/Construction of Handwashing Stations	04	Loralai, Balochistan
3.	Rehabilitation/Construction of School Buildings	08	Loralai, Balochistan
4.	Rehabilitation/Construction of Sanitation Facilities	05	Loralai, Balochistan

TYPE OF PROCUREMENT: [Single stage two envelope process](#)

CLOSING DATE AND TIME: **Monday 30th December, 2024 (COB)**

GENERAL INFORMATION

The Office of the Muslim Aid (MAP) Islamabad invites -bids from qualified, Contractors/ vendors/suppliers / Authorized Dealers, duly registered with the government of the Islamic Republic of Pakistan and Pakistan Engineering Council to submit a firm offer for the “Rehabilitation & Construction Works in Schools of Loralai, Balochistan”. The construction firm offers from the successful bidders would form the basis for an award of a contract:-

BIDDING DOCUMENTS

The following annexes form an integral part of this invitation to Bid:

Annex A: Detailed Specification of ITB / Drawings / Design for Rehabilitation & Construction Works in Schools

Annex B: General Terms and Conditions for Purchase/supply of Goods

Annex C: Vendor Registration Form and Instruction for completion of bid

SECTION I: BIDDING INFORMATION

a) ACKNOWLEDGMENT

Bidders are requested to confirm the receipt of this [ITB](#) and send the expression of their intention to participate to the addresses (courier) provided in the “SUBMISSION OF BIDS” section of this ITB.

b) QUERIES

i) Bidders are required to submit all their **inquiries in respect of this Invitation to bid by e-mail to procurement@muslimaid.org.pk by Thursday, 26th December, 2024: 5:00 p.m.** Muslim Aid may, at its discretion, copy any reply to a particular question to all other invited Bidders.

IMPORTANT: Including copies of your offer with any correspondence sent directly to the attention of the responsible buyer will result in disqualification of the offer. Please send your offer directly to the address provided in this ITB's “SUBMISSION OF BIDS” section.

c) YOUR OFFER

Please submit your offer using the submission templates provided. It should conform to the following requirements and contain all information required. The offers not conforming to the requested format will not be considered forevaluation. Your offer should include the following information:

DELIVERY TIME: All items must be delivered to the specified locations as per the schedule given in Annex C OR AS SOON AS possible after placement of the confirmed order.

- **OFFERS** can be made for part of the requirement as listed in the attached **Annex-A**
- **COST:** The cost should include the Rehabilitation & Construction Work in Schools of Loralai, Balochistan Transportation and all applicable taxes as per government law.
- **CURRENCY:** Your proposal must be prepared in a single currency, PAK Rupees.
- **LANGUAGE:** Bids shall be prepared in English.
- **INSPECTION:** All civil construction work Specifications are subject to inspection and will be advised at the time of delivery. The selected contractor/ Supplier will inform MUSLIM AID when the civil construction work / Supplies will be ready for inspection. The inspection will be arranged by MUSLIM AID. Please note that inspection charges resulting from the contractor's default will be charged directly to the contractor.
- **PLACE OF INSPECTION:** The inspection will be held at the sites, as per the sites identified by MUSLIM AID.
- **COUNTRY OF ORIGIN OF THE SUPPLIER AND AREA OF OPERATION:** The bid shall state the country in which the items are manufactured.
- **BID VALIDITY:** The bid submitted must remain valid for acceptance for 03 Months from the Invitation to Bid closing date.
- **VENDOR REGISTRATION:** Contractors/suppliers are requested to complete and submit with their offer the vendor registration form (Annex D), together with the necessary supporting documentation unless they have already been registered with **Muslim Aid (MAP)** and have received purchase orders within the last 3 years. All the companies are required to submit registration documents for example.
 - **Dealers/Partnership certificates issued by principal companies/organizations**
 - **Certificate of registration from PEC – Category C-6 and above)**
 - **Certificates of Work completed within the last 3 years or so**
 - **National Tax Number / STN**
 - **Update bank statement last one year.**
 - **Or any other document issued by a government regulatory body certifying the legality of their business.**

▪ **BID EVALUATION:**

d.1) Supplier Registration

The qualified supplier/ Contractor will be added to the vendor registration after investigation of suitability based on the submitted Vendor / Contractor Registration Form and supporting documents. The investigation involves consideration of several factors such as:

- Financial Standing (6 Monthly Bank Statement)
- Minimum three years of Previous experience in relevant civil work
- Core business
- Track record
- Minimum volume of annual work
- Technical Knowledge of the work under consideration
- Contract capacity
- Interested contracting companies must share the details of their technical staff along with the machinery.
- Potential bidders are informed that your application MUST accompany **3 % earnest money** as a call deposit in the form of a Demand Draft in the Name of '**Muslim Aid (MAP)**' (Please note that the cheque or copy of Demand Draft will not be acceptable) This will be followed later by performance evaluation as a contractor such as:
- Ability to respond quickly to the Agency's needs.
Timely Rehabilitation & Construction Work in Schools of Loralai, Balochistan as per agreed design / Completion works as per quality and quantity with intime frame.
- Dependability of products and services.

d.2) Financial and Technical Evaluation

All bids from contractors will be evaluated based on:

- Compliance with the mentioned MUSLIM AID Specification and approved material as per samples
- Delivery Time / Completion of Work

IMPORTANT: For evaluation purposes only, the offers submitted in PKR currency

▪ **SUBMISSION OF BIDS**

Bids must be submitted in 2 (two) separately sealed envelopes as follows: enclosed in 1 outer sealed Envelope:

- 1 (one) sealed envelope containing technical part of the offer
- 1 (one) sealed envelope containing financial part of the offer
- **Sealed envelope containing:**
 - Annex A: Detailed Specification of ITB and design for Rehabilitation & Construction Work in Schools of Loralai, Balochistan
 - Annex B: General Terms and Conditions for Purchase/supply of Goods/Rehabilitation/ Rehabilitation & Construction Work in Schools of Loralai, Balochistan
 - Annex C: Vendor Registration Form and Instruction for completion of bid
 - A sealed envelope containing the Technical & Financial part of the offer (ANNEXURE A & B)

To be sent only through courier or by hand to the following addresses clearly marked as follows:

NOT TO BE OPENED BY THE REGISTRY

MAP/MAUK/24/5297-35/1-4 (Bids Required for Rehabilitation & Construction Work in Schools of Loralai, Balochistan)

MUSLIM AID Ad (MAP)

**Plot # 1, First Floor, Executive Business
Centre, Main Double Road, FECHS, E-11/2,
Islamabad**

Offers submitted must be sealed as detailed below:

a. the envelope should **be marked tender Number and addressed** as above,

All Bids must be received by **Monday 30th December, 2024 (COB)**

LATE SUBMISSION OF BIDS: Bids received after the deadline for submission of BIDs and BIDs transmitted in any other manner than those indicated above will not be considered.

BID ACCEPTANCE

MUSLIM AID reserves the right to accept the whole or split. Please note **that the lowest offer is not the only criterion for acceptance of the offer**). Muslim Aid has the right to select the contractor /Supplier against whole or split.

MUSLIM AID may, at its discretion, extend the deadline for the submission of proposals, by notifying all prospective suppliers in writing. The extension of the deadline may accompany a modification of the solicitation documents prepared by MUSLIM AID at its own initiative or in response to a clarification requested by a prospective supplier.

a) **CURRENCY AND PAYMENT TERMS FOR Rehabilitation & Construction Work in Schools of Loralai, Balochistan**

Any Contract/Purchase Order (PO) issued as a result of this ITB will be made in Pakistani Rupees. All Government taxes are applicable.

Yours sincerely,



M. Sulman Baig
Procurement & Logistics Manager
MUSLIM AID

Plot # 1, First Floor, Executive Business Centre,
Main Double Road, FECHS E-11/2, Islamabad

ANNEXURE A

Sr. #	Name of Activity	Amount in PKR
1	Total cost of Establishment of ECE Class Rooms	
2	Total cost of Installation/Construction of Handwashing Stations	
3	Total cost of Rehabilitation/Construction of School Buildings	
4	Total cost of Rehabilitation/Construction of Sanitation Facilities	
	Total Cost of All Lots including Sales Tax	

1. Establishment of ECE Class Rooms

BoQ- MATERIAL COST/ABSTRACT OF COST
Establishment of ECE Class Rooms

(DETAIL SPECIFICATION OF CIVIL CONSTRUCTION WORK AND MATERIAL SPECIFICATION)

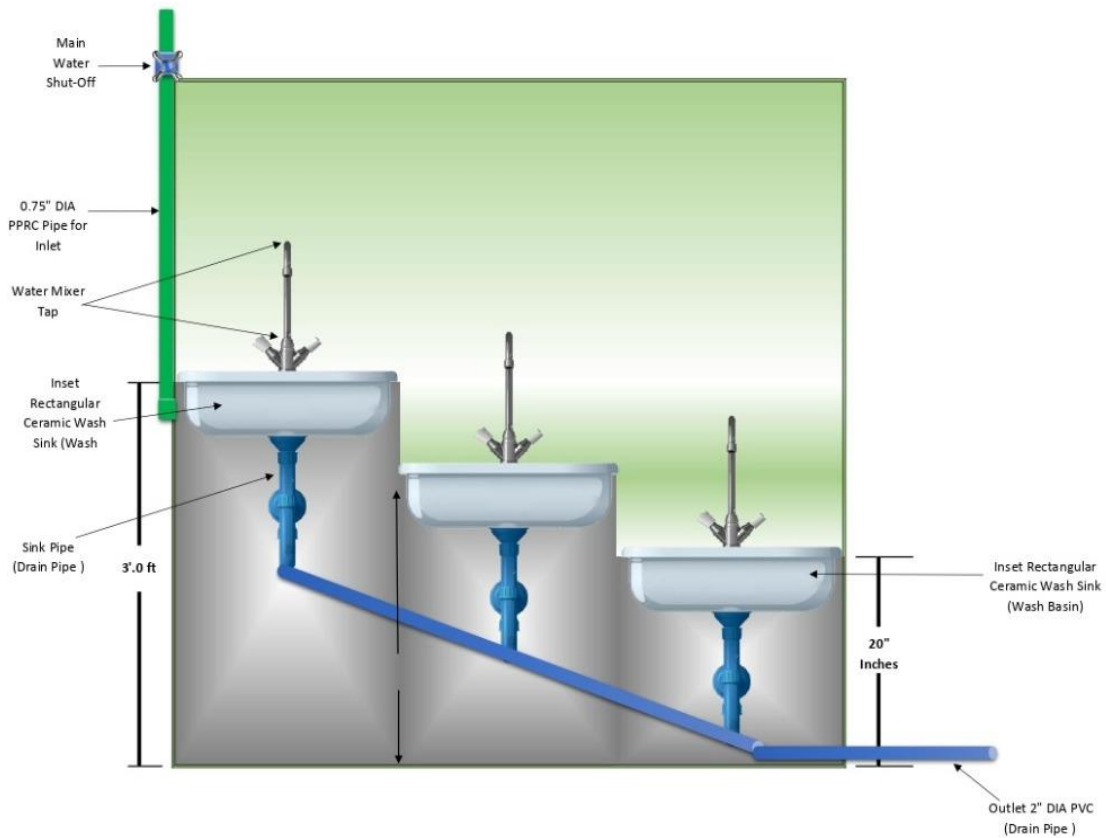
Sr. No.	Item Description	Units	Qty	Unit Rate	Amount
1	Scrapping or removing old paint and distemper, filling of cracks with grout, and apply two to three coats of approved MATT finish paint in the specified color/shade as directed by the supervising engineer.	Sft	700		
2	Painting the walls of the child-friendly ECE room with sketches and writing featuring various evocative/significant quotes and cartoons, as per the directions of the supervising engineer.	Job	1		
	Total Cost of 01 ECE Room (Rs)				
	Total Cost for 08 ECE Rooms Inclusive of taxes (Rs)				

2. Installation/Construction of Handwashing Stations

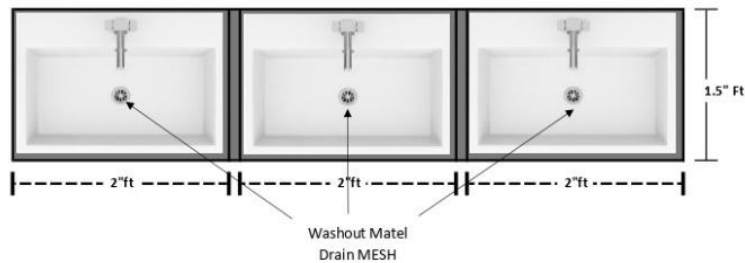
Construction of 04 WASH Station in 04 Government Schools in District Loralai					
BILL OF QUANTITIES					
Sr #	Item Description	Unit	Qty	Unit Rate (PKR)	Total Amount
1	Providing and installation of medium size Ceramic Owl shape Sink for construction of hand washing stations at school fixing PCC or bricks works and chrome single phase basin tap, and other accessories well-known local brand of good quality as per drawing or as per instructions of Field Engineer	Job	3		
2	Supply and lay mixed plain cement concrete (PCC 1:2:4) for the foundation and flooring of handwash areas, ensuring proper compaction and minimum curing 7 days maximum 28 days.	Cft	15		
3	Providing and laying of Bricks masonry around hand WASH station using first class solid burnt brick masonry set in cement sand mortar 1:5 ratio with proper curing, without curing structure won't be accepted.	Cft	21		
4	External Plain Cement Plaster 1:3 ratio 1/2" thick including proper curing etc.	Sft	70		
5	Providing and complete installation of UPVC pipe 3" dia waste pipe of class B including all fittings TEE, sockets, elbows etc. complete in all respect	Rft.	40		
6	Providing & installation of PPRC pipe 25mm under surface including all kind of fitting, connections of water points, Tees, sockets, one gate valve, reducers etc. complete in all respect as per instruction of Engineer	Rft.	50		
7	Providing and complete installation of HDPE PN-10 pipe 3mm with iron clamp @ 10' C/C including all kind of fitting, connections of water points, TEEs, sockets, reducers etc. complete in all respect as per instruction of Engineer	Rft.	80		
8	providing and laying 1/4" to 3/8" (6mm to 9mm) thick Glazed/ Matt tiles of white color and size in floor laid upto 5 feet over 1" (25mm) thick cement sand mortar base including jointing and washing the tiles with white cement slurry of matching color by using color pigment and curing etc as per directions of site engineer	Sft	130		
9	Provide and fixing of fix 3 mirror size 1*2 over brass tap fix in glazes tile on hand wash station as per instruction of Engineer	No's.	3		
Cost of Single WASH Station inclusive of taxes (Rs)					
Total Cost in PKR for 04 WASH Station inclusive of taxes (Rs)					

HANDS WASH POINTS

HANDS WASH POINTS FOR THE CHILDRENs OF PRIMARY SCHOOL STUDENTS



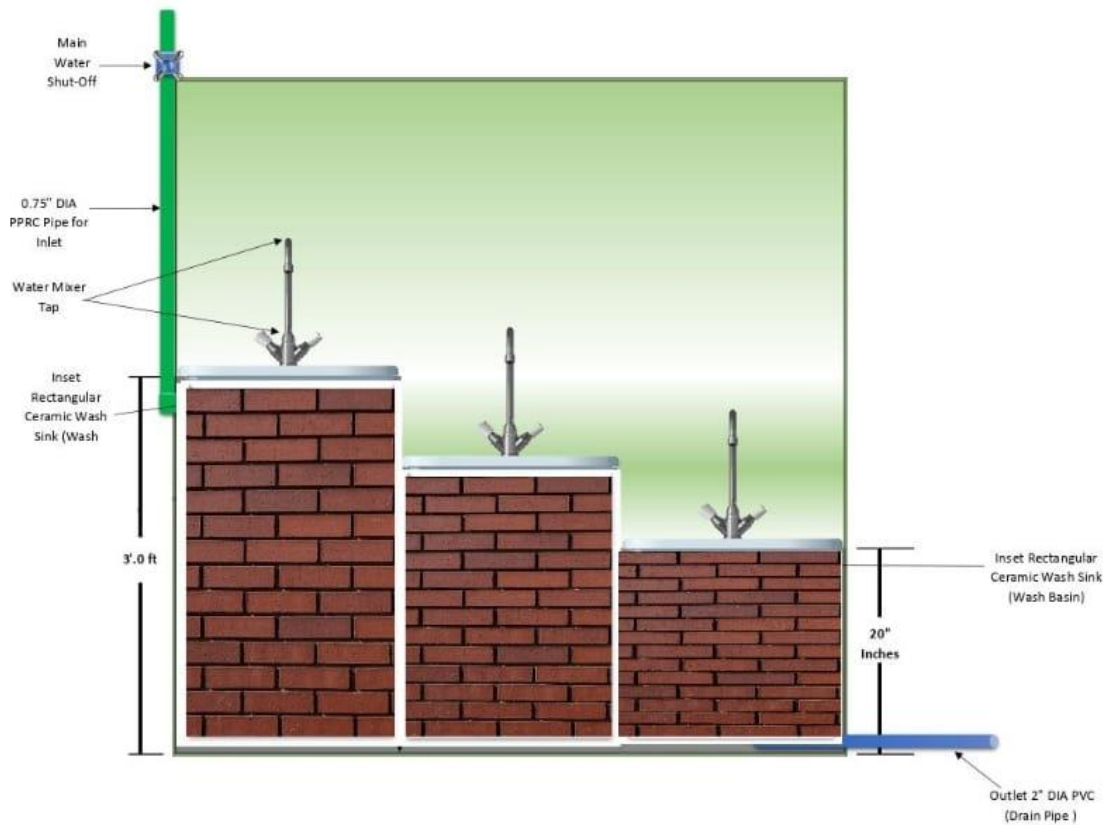
FRONT VIEW OF HANDS WASH POINT



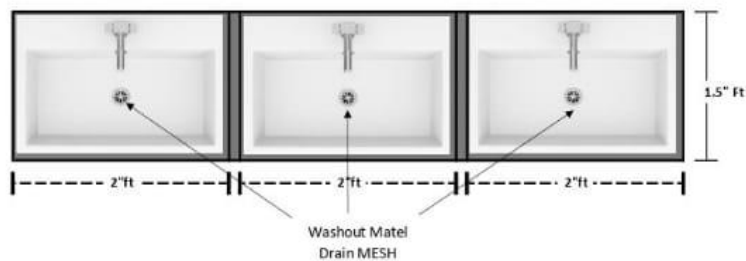
TOP VIEW OF HANDS WASH POINT

HANDS WASH POINTS

HANDS WASH POINTS FOR THE CHILDRENs OF PRIMARY SCHOOL STUDENTS



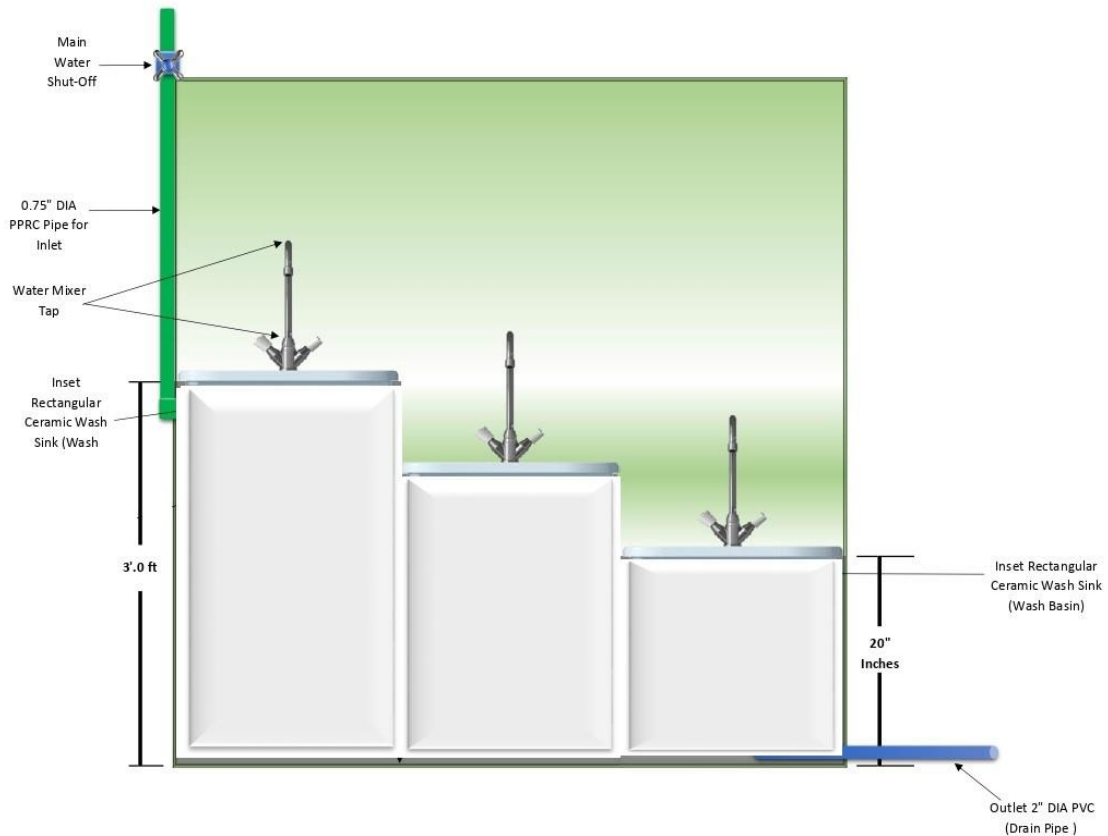
FRONT VIEW OF HANDS WASH POINT



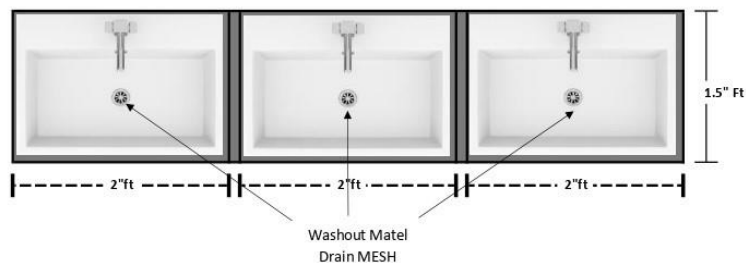
TOP VIEW OF HANDS WASH POINT

HANDS WASH POINTS

HANDS WASH POINTS FOR THE CHILDRENs OF PRIMARY SCHOOL STUDENTS



FRONT VIEW OF HANDS WASH POINT



TOP VIEW OF HANDS WASH POINT

3. Rehabilitation/Construction of School Buildings

BoQ Material Cost/Abstract Cost					
School # 01 GBHS Marah Tangi, Loralai					
(A) Civil Works Materials					
Sr #	Item Description	Units	Qty	Unit Rate	Total
1	Repairs/ Refixing of Internal & External plaster of thickness 1/2" in cement sand mortar 1:4 patches of damaged area, including cutting the patch in proper shape, raking out joints and preparing and plastering the surface of the walls complete	Sft	200		
2	Providing and laying of Hand mixed plain cement concrete (PCC 1:2:4) for coping top on the roof and floor. Using graded, crushed boulders 3/4 inch (19mm) and down; compacting and curing,	Cft	350		
3	Providing and laying of mixed plain cement concrete (PCC 1:2:4) Ramp using graded crushed boulders 3/4 inch (19mm) and down; with finishing and proper curing.	Cft	20		
4	surface Leveling for sustainable drainage system using 0-3/4-inch crushed stone for pathways and stairs is a great way to manage water runoff while enhancing the landscape.	Cft	400		
5	supply and lying of first-class solid burnt brick masonry to create a beautifully structured around garden and brick should fix in few cm deep with lying of cement sand mortar CSM 1:5 ratio, incorporating a drainage system with 0-3/4-inch crushed stone and finishing with outdoor paint.	Rft	250		
6	Providing and Installing Visibility Sign Board of 4'x4' Dimensions on 18 SWG Iron Sheet including G.I Pipes frame for Supporting Purpose of 1" Dia Placed at the Height of At least 4.5 Ft Above the Ground with Strong Concrete Foundation of at least 1 Ft Depth, Painted with Approved Color and Logos and Details of the Project Provided on Site. As per Directions of Engineer in Charge.	Job	1		
7	Supply and Installation of Visibility 18SWG Gauge (0.050"/1.27mm) Stainless Steel plate size (2' ft x 1.5'ft) with logo and project title and scheme details etc.	No's	1		
	Total Cost of Civil Works Materials (Rs.)				
(B) Repairing & Replacement of Doors, Windows, Windows Mesh, Cupboards, & others works like fixing of locks, alignment, tower bolt etc.					
Sr #	Item Description	Units	Qty	Unit Rate	Total
1	Replacement of standard size main wooden door of class room 7'ft x 4'ft size, fixing in galvanized frame, horns size 6" inch 3 horns each side (top, center, & bottom), 2 Handles inside, 3 hinges of 4" size on each side, 2 Bolt Inside and 1 lock outside, with proper paint Color and filling and others accessories Etc.	No's	2		
2	Minor Repairing of standard size main wooden door of class room size, fixing in galvanized frame along with 1'ft ventilator, horns size 6" inch 3 horns each side (top, center, & bottom), 2 Handles inside, 3 hinges of 4" size on each side, 2 Bolt Inside and 1 lock outside. Double opening, with proper paint Color and filling and others accessories Etc.	No's	6		

3	Minor Repairing of iron window panel 2*4 fixing in galvanized frame horns size 4" inch 3 horns each side (top, center, & bottom) other, Accessories: Screws, anchors, and necessary hardware with proper paint Color and filling and others accessories Etc.	No's	10		
4	Providing and fixing 2'-9" high Stair hand railing for supporting PWDs, comprising of 2½" dia 1 6-gauge S.S pipe hand rail fixed with 2½" dia pipe blusters at specified distance fixed at top of steps with expansion bolts, 2 Nos. of 16 gauge 1" dia S.S pipes horizontally fixed with blusters, Complete in all respects as per directions of site engineer.	Job	2		
5	Aluminum Hand Rail for Disabled persons (Blind) So that they may use it for their easy access. HT Pole 50mm & VT Pole 25mm Complete in all aspects as decided by Engineer incharge at site. As specified by Engineer	Rft	10		
6	supply and installation of Double layer fiber sheet panels fix in MS iron angle frames size (6'ft x 3'ft) with paint color 2 coats, on outer side of windows of library/conference hall, paint metal zinc paint before oil paint two to three coats, specially designed for the purpose of retain the rain water to enter in it.	No's	5		
7	Providing and installation of angle iron frame GI wire gauze 24 SWG, (12x12) meshes per sq.in., fixed outer side to steel windows size (6ft x 4ft) etc, complete in all respects	No's	6		
8	Supply & Fixing of Broken windowpanes (Glass piece) in classroom size (3ft x 1.5ft) and thickness (5mm) with all aspect	No's	20		

Total Cost for Installation and Fixing of Windows, Doors and others Cabinets (Rs.)

(C) Paint, Distempering, Whitewash Works

Sr #	Item Description	Units	Qty	Unit Rate	Total
1	Weather Shield for external exposed surfaces of approved shade in two or more coats as per engineer's instructions on plastered rendered and/or concrete surface over and including the cost of priming coat, surface preparation, dusting, rubbing down smooth, filling cracks, holes removing blisters and other blisters and other imperfections in ground floor or basement. (@ atleast 1.65 Litre per 10 Sq.m) as per instruction of Engineer	Sft	4800		
2	Painting with approved quality Matt paint for Internal in two or more coats as per engineer's instructions on plastered rendered and/or concrete surface over and including the cost of priming coat, surface preparation, dusting, rubbing down smooth, filling cracks, holes removing blisters and other blisters and other imperfections in ground floor or basement. (@ atleast 1.65 Litre per 10 Sq.m) as per instruction of Engineer	Sft	4200		
3	Painting old & new surfaces, main gate, Doors / windows, Each subsequent coat	Sft	600		

Total Cost of Whitewash Works (Rs)

Grand Total of (A+B+C) inclusive of taxes (Rs)

BoQ Material Cost/Abstract Cost
School # 02 GBHS GBMS Oryagai Ganno Khan, Loralai
(A) Civil Works Materials

Sr #	Item Description	Units	Qty	Unit Rate	Total
1	Repairs/ Refixing of Internal & External plaster of thickness 1/2" in cement sand mortar 1:4 patches of damaged area, including cutting the patch in proper shape, raking out joints and preparing and plastering the surface of the walls complete	Sft	200		
2	Providing and laying of Hand mixed plain cement concrete (PCC 1:2:4) for fixing of MS Iron frame with double layer of fiber sheet shed made coping on the Shed. Using graded, crushed boulders 3/4 inch (19mm) and down; compacting and curing,	Cft	10		
3	Providing and laying of Hand mixed plain cement concrete (PCC 1:3:6) for floor under the Shed for seating area for students (PCC Floor), Using graded, crushed boulders 3/4 inch (19mm) and down; compacting and curing,	Cft	164		
4	Providing and laying of mixed plain cement concrete (PCC 1:2:4) Ramp using graded crushed boulders 3/4 inch (19mm) and down; with finishing and proper curing.	Cft	20		
5	Supply and fixing of double layer fiber glass sheet shed size (32'ft x 24'ft) Hight 11.5ft foundation to roof using truss frame made of MS Iron one side fix up to 2'ft deep in the ground and using anchor bolts grade 10.5 size M12X120 at standard distance to connect with concrete wall, & using truss frame proper cross weld and proper jointing of cross pipes complete in all respect. using 18SWG gauge of angle iron or pipes proper mold with finishing & to paint Metal zinc paint before 2 or 3 coats of oil paints. fixing MAP steel logo, cross weld with angle iron or as per standard specifications approved by engineer in charge	Sft	644		
6	Providing and laying of Subgrade compacted materials for floor under shed	Cft	480		
7	Providing and laying of mixed plain cement concrete (PCC 1:2:4) in DPC; using graded crushed boulders 3/4 inch (19mm) and down; shuttering and its removal, compacting and curing, along with providing and laying bitumen 2 Coats over spreading of plastic sheet.	Cft	12		
8	Providing and laying first class solid burnt brick masonry including raking out joints and curing in foundation and substructure. with cement sand mortar CSM 1:5 ratio with 9 inch wall thickness in order to partition wall for several class and retain rainwater, side sun heat and dust storm during class time & to create a beautifully structured around garden incorporating a drainage system with 0-3/4 inch crushed stone and finishing with outdoor paint.	Cft	210		
9	surface Leveling for sustainable drainage system using 0-3/4 inch crushed stone for pathways and stairs is a great way to manage water runoff while enhancing the landscape.	Cft	200		
10	providing and fixing of zinc corrugated CGI (galvanized iron) press tin sheets size 15*3 on classroom roof using PCC (1;2;4) around wall or Brick masonry, use grade 10.5 M12X120 anchor bolt fix sheet to Gadar, paint two to three coats.	Kg	240		

11	Providing and Installing Visibility Sign Board of 4'x4' Dimensions on 18 SWG Iron Sheet including G.I Pipes frame for Supporting Purpose of 1" Dia Placed at the Height of at least 4.5 ft above the Ground with Strong Concrete Foundation of at least 1 Ft Depth, Painted with Approved Color and Logos and Details of the Project Provided on Site. As per Directions of Engineer In charge.	Nos	1		
12	Supply and Installation of Visibility 18SWG Gauge (0.050"/1.27mm) Stainless Steel plate size (2' ft x 1.5'ft) with logo and project title and scheme details etc.	Nos	1		
Total Cost of Civil Works Materials (Rs.)					

(B) Repairing & Replacement of Doors, Windows, Windows Mesh, Cupboards, & others works like fixing of locks, alignment, tower bolt etc.

Sr #	Item Description	Units	Qty	Unit Rate	Total
1	Perform minor repairs on the standard-sized main wooden classroom door, installing it in a galvanized frame with a 1-foot ventilator. Add three 6-inch horns on each side (top, center, and bottom), two handles inside, three 4-inch hinges on each side, two bolts inside, and one lock on the outside. Ensure the door has a double opening, is properly painted, and includes all necessary accessories and finishing touches.	Nos.	2		
2	Providing and installation of angle iron frame CGI wire gauze 24 SWG, (12x12) meshes per sq.in., fixed outer side to steel windows size (6ft x 4ft) etc. complete in all respects	Nos.	4		
3	Providing and fixing 2'-9" high Stair hand railing for supporting PWDs, comprising of 2½" dia 1 6-gauge S.S pipe hand rail fixed with 2½" dia pipe blusters at specified distance fixed at top of steps with expansion bolts, 2 Nos. of 16 gauge 1" dia S.S pipes horizontally fixed with blusters, Complete in all respects as per directions of site engineer.	Job	2		
4	Aluminum Hand Rail for Disabled persons (Blind) So that they may use it for their easy access. HT Pole 50mm & VT Pole 25mm Complete in all aspects as decided by Engineer in charge at site. As specified by Engineer	Rft	10		
5	Supply & Fixing of Broken windowpanes (Glass piece) in classroom size (3ft x 1.5ft) and thickness (5mm) with all aspect	Nos.	10		
Total Cost for Installation and Fixing of Windows, Doors and others Cabinets (Rs.)					

(C) Paint, Distemping, White Wash Works

Sr #	Item Description	Units	Qty	Unit Rate	Total
1	Weather Shield for external exposed surfaces of approved shade in two or more coats as per engineer's instructions on plastered rendered and/or concrete surface over and including the cost of priming coat, surface preparation, dusting, rubbing down smooth, filling cracks, holes removing blisters and other blisters and other imperfections in ground floor or basement. (@ atleast 1.65 Liter per 10 Sq.m) as per instruction of Engineer	Sft	3700		

2	Painting with approved quality Matt paint for Internal in two or more coats as per engineer's instructions on plastered rendered and/or concrete surface over and including the cost of priming coat, surface preparation, dusting, rubbing down smooth, filling cracks, holes removing blisters and other blisters and other imperfections in ground floor or basement. At least 1.65 Liter per 10 Sq.m) as per instruction of Engineer	Sft	1900		
3	painting old and new surfaces like doors, windows, ventilator, Main gate.	Sft	300		
	Total Cost of Whitewash Works (Rs.)				
	Grand Total of (A+B+C) inclusive of taxes (Rs				

BoQ Material Cost/Abstract Cost
School # 03 GBHS Rodline, Loralai
(A) Civil Works Materials

Sr #	Item Description	Units	Qty	Unit Rate	Total
1	Providing and laying of Hand mixed plain cement concrete (PCC 1:2:4) for coping top on the roof or floor. Using graded, crushed boulders 3/4 inch (19mm) and down; compacting and curing,	Cft	350		
2	Providing and laying of mixed plain cement concrete (PCC 1:2:4) Ramp using graded crushed boulders 3/4 inch (19mm) and down; with finishing and proper curing.	Cft	20		
3	Repairs/ Refixing of Internal & External plaster of thickness 1/2" in cement sand mortar 1:4 patches of damaged area, including cutting the patch in proper shape, raking out joints and preparing and plastering the surface of the walls complete	Sft	482		
4	surface Leveling for sustainable drainage system using 0-3/4-inch crushed stone for pathways and stairs is a great way to manage water runoff while enhancing the landscape.	Cft	300		
5	supply and lying of first-class solid burnt brick masonry to create a beautifully structured garden bed and brick should fix in few cm deep with lying of cement sand mortar CSM 1:5 ratio, incorporating a drainage system with 0-3/4-inch crushed stone and finishing with outdoor paint.	Cft	150		
6	Providing and Installing High Quality Visibility Sign Board of 4'x4' Dimensions on 18 SWG Iron Sheet including G.I Pipes frame for Supporting Purpose of 1" Dia Placed at the Height of At least 4.5 ft above the Ground with Strong Concrete Foundation of at least 1 Ft Depth, Painted with Approved Color and Logos and Details of the Project Provided on Site. As per Directions of Engineer In Charge.	Nos	1		
7	Supply and Installation of Visibility 18SWG Gauge (0.050"/1.27mm) Stainless Steel plate size (2' ft x 1.5'ft) with logo and project title and scheme details etc.	Nos	1		
Total Cost of Civil Works Materials (Rs.)					

(B) Repairing & Replacement of Doors, Windows, Windows Mesh, Cupboards, & others works like fixing of locks, alignment, tower bolt etc.

Sr #	Item Description	Units	Qty	Unit Rate	Total
1	Perform Minor Repairing of iron window panel 2*4 fixing in galvanized frame horns size 4" inch 3 horns each side (top, center, & bottom) other, accessories: Screws, anchors, and necessary hardware with proper paint Color and filling and others accessories Etc.	Nos.	7		
2	Providing and fixing 2'-9" high Stair hand railing for supporting PWDs, comprising of 2½" dia 16-gauge S.S pipe hand rail fixed with 2½" dia pipe blusters at specified distance fixed at top of steps with expansion bolts, 2 Nos. of 16 gauge 1" dia S.S pipes horizontally fixed with blusters, Complete in all respects as per directions of site engineer.	Job	2		

3	Aluminum Hand Rail For disabled persons (Blind) So that they may use it for their easy access. HT Pole 50mm & VT Pole 25mm Complete in all aspects as decided by Engineer in charge at site. As specified by Engineer	Rft	10		
4	Perform minor repairs on the standard-sized main wooden classroom door, installing it in a galvanized frame along with a 1-foot ventilator. add three 6-inch horns on each side (top, center, and bottom), two handles inside, three 4-inch hinges on each side, two bolts inside, and one lock outside. Ensure the door has a double opening, is properly painted, and includes all necessary accessories.	Nos.	2		
5	Providing and installation of a 3 iron frame CGI wire gauze 24 SWG, (12x12) meshes per sq.in., fixed outer side to steel windows size (4ft x 4ft) etc, complete in all respects	Nos.	4		
6	Carry out minor repairs on the 6x3 cupboard, adding three 6-inch horns on each side (top, center, and bottom), two handles inside, three 4-inch hinges on each side, and one lock on the outside with proper two to three paint coat.	Nos.	2		
7	Supply & Fixing of Broken windowpanes (Glass piece) in classroom size (3ft x 2ft) and thickness (5mm) with all aspect	Nos.	18		
Total Cost for Installation and Fixing of Windows, Doors and others Cabinets (Rs.)					
(C) Paint, Distempering, Whitewash Works					
Sr #	Item Description	Units	Qty	Unit Rate	Total
1	Weather Shield for external exposed surfaces of approved shade in two or more coats as per engineer's instructions on plastered rendered and/or concrete surface over and including the cost of priming coat, surface preparation, dusting, rubbing down smooth, filling cracks, holes removing blisters and other blisters and other imperfections in ground floor or basement. (at least 1.65 Liter per 10 Sq.m) as per instruction of Engineer	Sft	3200		
2	Painting with approved quality Matt paint for Internal in two or more coats as per engineer's instructions on plastered rendered and/or concrete surface over and including the cost of priming coat, surface preparation, dusting, rubbing down smooth, filling cracks, holes removing blisters and other blisters and other imperfections in ground floor or basement. (at least 1.65 Litre per 10 Sq.m) as per instruction of Engineer	Sft	1080		
3	Painting old & new surfaces: Main gate, Doors / windows any type, cupboard, Each subsequent coat.	Sft	400		
Total Cost of Whitewash Works (Rs.)					
Grand Total of (A+B+C) inclusive of taxes (Rs.)					

BoQ Material Cost/Abstract Cost					
School # 04 GBHS Shingul Shah, Loralai					
(A) Civil Works Materials					
Sr #	Item Description	Units	Qty	Unit Rate	Total
1	Providing and laying of Hand mixed plain cement concrete (PCC 1:2:4) for coping top on the roof and floor. Using graded, crushed boulders 3/4 inch (19mm) and down; compacting and curing,	Cft	169		
2	Repairs/ Refixing of Internal & External plaster of thickness 1/2" in cement sand mortar 1:4 patches of damaged area, including cutting the patch in proper shape, raking out joints and preparing and plastering the surface of the walls complete	Sft	450		
3	providing and fixing of zinc corrugated CGI (galvanized iron) press tin sheets size 15*3 using PCC (1;2;4), paint two to three coats, to prevent disruption during the monsoon season.	Kg	45		
4	surface Leveling for sustainable drainage system using 0-3/4 inch crushed stone for pathways and stairs is a great way to manage water runoff while enhancing the landscape.	Cft	95		
5	supply and lying of first-class solid burnt brick masonry to create a beautifully structured around garden and brick should fix in few cm deep with lying of cement sand mortar CSM 1:5 ratio, incorporating a drainage system with 0-3/4 inch crushed stone and finishing with outdoor paint.	Cft	29		
6	Providing and Installing of Visibility Sign Board of 4'x4' Dimensions on 18 SWG Iron Sheet including G.I Pipes frame for Supporting Purpose of 1" Dia Placed at the Height of at least 4.5 Ft Above the Ground with Strong Concrete Foundation of at least 1 Ft Depth, Painted with Approved Color and Logos and Details of the Project Provided on Site. As per Directions of Engineer In Charge.	Nos	1		
7	Supply and Installation of Visibility 18SWG Gauge (0.050"/1.27mm) Stainless Steel plate size (2' ft x 1.5'ft) with logo and project title and scheme details etc.	Nos	1		
Total Cost of Civil Works Materials (Rs.)					
(B) Repairing & Replacement of Doors, Windows, Windows Mesh, Cupboards, & others works like fixing of locks, alignment, tower bolt etc.					
Sr #	Item Description	Units	Qty	Unit Rate	Total
1	Minor Repairing of slandered size main wooden door of class room size, fixing in galvanized frame along with 1'ft ventilator, horns size 6" inch 3 horns each side (top, center, & bottom), 2 Handles inside, 3 hinges of 4" size on each side, 2 Bolt Inside and 1 lock outside. Double opening, with proper paint Color and filling and others accessories Etc.	Nos.	3		
2	Minor Repairing of standard size iron window panel 2*4 fixing in galvanized frame horns size 4" inch 3 horns each side (top, center, & bottom) other, Accessories: Screws, anchors, and necessary hardware with proper paint Color and filling and others accessories Etc.	Nos.	8		

3	Providing and installation of a 3 iron frame GI wire gauze 24 SWG, (12x12) meshes per sq.in., fixed outer side to steel windows size (4ft x 4ft) etc, complete in all respects	Nos.	4		
4	Providing and fixing 2'-9" high Stair hand railing for supporting PWDs, comprising of 2½" dia 16-gauge S.S pipe hand rail fixed with 2½" dia pipe blusters at specified distance fixed at top of steps with expansion bolts, 2 Nos. of 16 gauge 1" dia S.S pipes horizontally fixed with blusters, Complete in all respects as per directions of site engineer.	Job	2		
5	Aluminum Hand Rail For disabled persons (Blind) So that they may use it for their easy access. HT Pole 50mm & VT Pole 25mm Complete in all aspects as decided by Engineer in charge at site. As specified by Engineer	Rft	10		
6	Supply & Fixing of Broken windowpanes (Glass piece) in classroom size (3ft x 1.5ft) and thickness (5mm), and fixing of windowpanes with all aspects.	Nos.	10		
Total Cost for Installation and Fixing of Windows, Doors and others Cabinets (Rs.)					
(C) Paint, Distempering, Whitewash Works					
Sr #	Item Description	Units	Qty	Unit Rate	Total
1	Weather Shield for external exposed surfaces of approved shade in two or more coats as per engineer's instructions on plastered rendered and/or concrete surface over and including the cost of priming coat, surface preparation, dusting, rubbing down smooth, filling cracks, holes removing blisters and other blisters and other imperfections in ground floor or basement. (at least 1.65 Liter per 10 Sq.m) as per instruction of Engineer	Sft	4500		
2	Painting with approved quality Matt paint for Internal in two or more coats as per engineer's instructions on plastered rendered and/or concrete surface over and including the cost of priming coat, surface preparation, dusting, rubbing down smooth, filling cracks, holes removing blisters and other blisters and other imperfections in ground floor or basement. (at least 1.65 Liter per 10 Sq.m) as per instruction of Engineer	Sft	2900		
3	Painting old & new surfaces: Doors / windows/main gate: Each subsequent coat	Sft	596		
Total Cost of Whitewash Works (Rs.)					
Grand Total of (A+B+C) inclusive of taxes (Rs.)					

BoQ Material Cost/Abstract Cost
School # 05 GGMS Dost Mohammed Dhobi Gaat, Loralai
(A) Civil Works Materials

Sr #	Item Description	Units	Qty	Unit Rate	Total
1	Providing and laying of Hand mixed plain cement concrete (PCC 1:2:4) for coping top on the roof and floor. Using graded, crushed boulders 3/4 inch (19mm) and down; compacting and curing,	Cft	301		
2	Repairs/ Refixing of Internal & External plaster of thickness 1/2" in cement sand mortar 1:4 patches of damaged area, including cutting the patch in proper shape, raking out joints and preparing and plastering the surface of the walls complete	Sft	654		
3	surface Leveling for sustainable drainage system using 0-3/4 inch crushed stone for pathways and stairs is a great way to manage water runoff while enhancing the landscape.	Cft	20		
4	supply and lying of first-class solid burnt brick masonry to create a beautifully structured garden bed and brick should fix in few cm deep with lying of cement sand mortar CSM 1:5 ratio, incorporating a drainage system with 0-3/4-inch crushed stone and finishing with outdoor paint.	Cft	17		
5	Providing and Installing High Quality Visibility Sign Board of 4'x4' Dimensions on 18 SWG Iron Sheet including G.I Pipes frame for Supporting Purpose of 1" Dia Placed at the Height of At least 4.5 ft above the Ground with Strong Concrete Foundation of at least 1 Ft Depth, Painted with Approved Color and Logos and Details of the Project Provided on Site. As per Directions of Engineer In Charge.	Nos	1		
6	Supply and Installation of Visibility 18SWG Gauge (0.050"/ 1.27mm) Stainless Steel plate size (2' ft x 1.5'ft) with logo and project title and scheme details etc.	Nos	1		
Total Cost of Civil Works Materials (Rs.)					

(B) Repairing & Replacement of Doors, Windows, Windows Mesh, Cupboards, & others works like fixing of locks, alignment, tower bolt etc.

Sr #	Item Description	Units	Qty	Unit Rate	Total
1	Minor Repairing of slandered size main wooden door of class room size, fixing in galvanized frame along with 1'ft ventilator, horns size 6" inch 3 horns each side (top, center, & bottom), 2 Handles inside, 3 hinges of 4" size on each side, 2 Bolt Inside and 1 lock outside. Double opening, with proper paint Color and filling and others accessories Etc.	Nos.	4		
2	Providing and installation of angle iron frame CGI wire gauze 24 SWG, (12x12) meshes per sq.in., fixed outer side to steel windows size (4ft x 4ft) etc, complete in all respects	Nos.	4		
3	Minor Repairing of standard size iron window panel 2*4 fixing in galvanized frame horns size 4" inch 3 horns each side (top, center, & bottom) other Accessories: Screws, anchors, and necessary hardware with proper paint Color and filling and others accessories Etc.	Nos.	10		
4	Providing and fixing of ventilator (2' x 2') as per standard specifications (window mesh and grill) approved by engineer in charge; with painted.	No's	2		

5	Providing and fixing 2'-9" high Stair hand railing for supporting PWDs, comprising of 2½" dia 16-gauge S.S pipe hand rail fixed with 2½" dia pipe blusters at specified distance fixed at top of steps with expansion bolts, 2 Nos. of 16 gauge 1" dia S.S pipes horizontally fixed with blusters, Complete in all respects as per directions of site engineer.	Job	2		
6	Aluminum Hand Rail For disabled persons (Blind) so that they may use it for their easy access. HT Pole 50mm & VT Pole 25mm Complete in all aspects as decided by Engineer in charge at site. as specified by Engineer	Rft	10		
7	Providing and fixing of 2 double opening ZRK Lasani Plywood cupboard panel size 4*3 with wooden frame, stainless steel cabinet lock, 3 horns each side size 6" (top, center, & bottom), 2 Handles inside, 3 hinges of 4" size on each side, 2 Bolt Inside. proper MAP paint Color and filling and others accessories Etc.	Nos.	2		
8	Fixing of standard quality wooden door Handle Lock as per Engineer instruction.	Nos.	2		
9	Supply & Fixing of Broken windowpanes (Glass piece) in classroom size (3ft x 1.5) and thickness (5mm) with all aspect	Nos.	10		
Total Cost for Installation and Fixing of Windows, Doors and others Cabinets (Rs.)					

(C) Paint, Distempering, Whitewash Works

Sr #	Item Description	Units	Qty	Unit Rate	Total
1	Weather Shield for external exposed surfaces of approved shade in two or more coats as per engineer's instructions on plastered rendered and/or concrete surface over and including the cost of priming coat, surface preparation, dusting, rubbing down smooth, filling cracks, holes removing blisters and other blisters and other imperfections in ground floor or basement. (at least 1.65 Liter per 10 Sq.m) as per instruction of Engineer	Sft	500		
2	Painting with approved quality Matt paint for Internal in two or more coats as per engineer's instructions on plastered rendered and/or concrete surface over and including the cost of priming coat, surface preparation, dusting, rubbing down smooth, filling cracks, holes removing blisters and other blisters and other imperfections in ground floor or basement. (at least 1.65 Liter per 10 Sq.m) as per instruction of Engineer	Sft	4900		
3	Painting old & new surfaces: main gate, Doors / windows, Each subsequent coat	Sft	505		
Total Cost of Whitewash Works (Rs.)					
Grand Total of (A+B+C)) inclusive of taxes (Rs.)					

BoQ Material Cost/Abstract Cost
School # 06 GGMS Nek Muhammad Mardanzai, Loralai
(A) Civil Works Materials

Sr #	Item Description	Units	Qty	Unit Rate	Total
1	Providing and laying of Hand mixed plain cement concrete (PCC 1:2:4) for fixing of MS Iron frame with double layer of fiber sheet shed made coping on the Shed. Using graded, crushed boulders 3/4 inch (19mm) and down; compacting and curing,	Cft	10		
2	Providing and laying of Hand mixed plain cement concrete (PCC 1:3:6) for floor under the Shed for seating area for students (PCC Floor), Using graded, crushed boulders 3/4 inch (19mm) and down; compacting and curing,	Cft	108		
3	Providing and laying of Subgrade compacted materials for floor under shed	Cft	324		
4	Supply and fixing of double layer fiber glass sheet shed size (24'ft x 18'ft) Hight 12ft foundation to roof using truss frame made of MS Iron one side fix up to 2'ft deep in the ground and use zinc plated anchor bolts grade 10.5 size at standard distance to connect with concrete wall, & using truss frame proper cross weld and proper jointing of cross pipes complete in all respect. using 18SWG gauge of angle iron or pipes proper mold with finishing & to paint Metal zinc paint before 2 or 3 coats of oil paints. fixing MAP steel logo, cross weld with angle iron or as per standard specifications approved by engineer in charge	Sft	504		
5	Painting with approved quality Matt paint for Internal and Weather Shield for external exposed surfaces of approved shade in two or more coats as per engineer's instructions on plastered rendered and/or concrete surface over and including the cost of priming coat, surface preparation, dusting, rubbing down smooth, filling cracks, holes removing blisters and other blisters and other imperfections in ground floor or basement. as per direction of Engineer.	Sft	500		
6	Providing and laying first class solid burnt brick masonry including raking out joints and curing in foundation and substructure. with cement sand mortar CSM 1:5 ratio with 9-inch wall thickness in order to retain rainwater, side sun heat and dust storm during class time.	Cft	116		
7	Providing and laying of mixed plain cement concrete (PCC 1:2:4) in DPC; using graded crushed boulders 3/4 inch (19mm) and down; with finishing, proper curing, along with providing and laying bitumen 2 Coats over spreading of plastic sheet.	Cft	9		
8	Painting old and new surfaces of Main gate.	Sft	140		
9	Repairs/ Refixing of Internal & External plaster of thickness 1/2" to 3/4" in cement sand mortar 1:4 patches of damaged area, including cutting the patch in proper shape, raking out joints and preparing and plastering the surface of the walls complete	Sft	156		
10	Providing and Installing Visibility Sign Board of 4'x4' Dimensions on 18 SWG Iron Sheet including G.I Pipes frame for Supporting Purpose of 1" Dia Placed at the Height of at least 4.5 ft above	Nos	1		

	the Ground with Strong Concrete Foundation of at least 1 Ft Depth, Painted with Approved Color and Logos and Details of the Project Provided on Site. As per Directions of Engineer in Charge.				
11	Supply and Installation of Visibility 18SWG Gauge (0.050"/1.27mm) Stainless Steel plate size (2' ft x 1.5'ft) with logo and project title and scheme details etc.	Nos	1		
Total Cost of Civil Works Materials (Rs.)					

BoQ Material Cost/Abstract Cost					
School # 07 GBMS Dilli, Loralai					
(A) Civil Works Materials					
Sr #	Item Description	Units	Qty	Unit Rate	Total
1	Providing and laying of Hand mixed plain cement concrete (PCC 1:2:4) for coping top on the roof. Using graded, crushed boulders 3/4 inch (19mm) and down; fulfilling minimum cube crushing at 28 days; compacting and curing,	Cft	50		
2	surface Leveling for sustainable drainage system using 0-3/4 inch crushed stone for pathways and stairs is a great way to manage water runoff while enhancing the landscape.	Cft	200		
3	supply and lying of first-class solid burnt brick masonry to create a beautifully structured garden bed and brick should fix in few cm deep with lying of cement sand mortar CSM 1:5 ratio, incorporating a drainage system with 0-3/4-inch crushed stone and finishing with outdoor paint.	Cft	120		
4	Providing and laying of mixed plain cement concrete (PCC 1:2:4) Ramp using graded crushed boulders 3/4 inch (19mm) and down; with finishing and proper curing.	Cft	20		
5	Providing and Installing High Quality Visibility Sign Board of 4'x4' Dimensions on 18 SWG Iron Sheet including G.I Pipes frame for Supporting Purpose of 1" Dia Placed at the Height of at least 4.5 ft above the Ground with Strong Concrete Foundation of at least 1 Ft Depth, Painted with Approved Color and Logos and Details of the Project Provided on Site. As per Directions of Engineer In charge.	Nos	1		
6	Supply and Installation of Visibility 18SWG Gauge (0.050"/1.27mm) Stainless Steel plate size (2' ft x 1.5'ft) with logo and project title and scheme details etc.	Nos	1		
Total Cost of Civil Works Materials (Rs.)					
(B) Repairing & Replacement of Doors, Windows, Windows Mesh, Cupboards, & others works like fixing of locks, alignment, tower bolt etc.					
Sr #	Item Description	Units	Qty	Unit Rate	Total
1	Perform minor repairs on the standard-sized main wooden classroom door, installing it in a galvanized frame with a 1-foot ventilator. Add three 6-inch horns on each side (top, center, and bottom), two handles inside, three 4-inch hinges on each side, two bolts inside, and one lock on the outside. Ensure the door has a double opening, is properly painted, and includes all necessary accessories and finishing touches.	Nos.	3		

2	Minor Repairing of iron window panel 2*4 fixing in galvanized frame horns size 4" inch 3 horns each side (top, center, & bottom) other accessories: Screws, anchors, and necessary hardware with proper paint Color and filling and others accessories Etc.	Nos.	4		
3	Providing and fixing 2'-9" high Stair hand railing for supporting PWDs, comprising of 2½" dia 16-gauge S.S pipe hand rail fixed with 2½" dia pipe blusters at specified distance fixed at top of steps with expansion bolts, 2 Nos. of 16 gauge 1" dia S.S pipes horizontally fixed with blusters, Complete in all respects as per directions of site engineer.	Job	2		
4	Aluminum Hand Rail For disabled persons (Blind) So that they may use it for their easy access. HT Pole 50mm & VT Pole 25mm Complete in all aspects as decided by Engineer in charge at site. As specified by Engineer	Rft	10		
5	providing and fixing of zinc corrugated CGI (galvanized iron) press tin sheets size 15*3 using anchor bolt size M12x120 to fix with MS Gadar, paint two to three coats, to prevent rainwater during into the classrooms.	Kg	90		
6	Provide and fixing of Mughal mild steel MS girder 10-12mm 2kg per 1ft on pillar as beam to support Tin sheet.	kg	36		
7	Supply & Fixing of Broken windowpanes (Glass piece) in classroom size (3ft x 1.5ft) and thickness (5mm) with all aspect	Nos.	5		
Total Cost for Installation and Fixing of Windows, Doors and others Cabinets (Rs.)					
(C) Paint, Distemping, Whitewash Works					
Sr #	Item Description	Units	Qty	Unit Rate	Total
1	Weather Shield for external exposed surfaces of approved shade in two or more coats as per engineer's instructions on plastered rendered and/or concrete surface over and including the cost of priming coat, surface preparation, dusting, rubbing down smooth, filling cracks, holes removing blisters and other blisters and other imperfections in ground floor or basement. at least 1.65 Liter per 10 Sq.m) as per instruction of Engineer	Sft	500		
2	painting old and new surfaces like doors, windows, Main gate.	Sft	500		
Total Cost of White Wash Works (Rs.)					
Grand Total of (A+B+C) inclusive of taxes (Rs.)					

BoQ Material Cost/Abstract Cost					
School # 08 GGPS Haji Abdul Sattar Nasar, Loralai					
(A) Civil Works Materials					
Sr #	Item Description	Units	Qty	Unit Rate	Total
1	Providing and laying of Hand mixed plain cement concrete (PCC 1:2:4) for coping top on the roof and floor. Using graded, crushed boulders 3/4 inch (19mm) and down; compacting and curing,	Cft	250		
2	Repairs/ Refixing of Internal & External plaster of thickness 1/2" in cement sand mortar 1:4 patches of damaged area, including cutting the patch in proper shape, raking out joints and preparing and plastering the surface of the walls complete	Sft	599		
3	Providing and laying of mixed plain cement concrete (PCC 1:2:4) Ramp using graded crushed boulders 3/4 inch (19mm) and down; with finishing and proper curing.	Cft	20		
4	surface Leveling for sustainable drainage system using 0-3/4 inch crushed stone for pathways and stairs is a great way to manage water runoff while enhancing the landscape.	Cft	100		
5	supply and lying of first-class solid burnt brick masonry to create a beautifully structured garden bed and brick should fix in few cm deep with lying of cement sand mortar CSM 1:5 ratio, incorporating a drainage system with 0-3/4-inch crushed stone and finishing with outdoor paint.	Cft	80		
6	Providing and Installing Visibility Sign Board of 4'x4' Dimensions on 18 SWG Iron Sheet including G.I Pipes frame for Supporting Purpose of 1" Dia Placed at the Height of at least 4.5 ft above the Ground with Strong Concrete Foundation of at least 1 ft Depth, Painted with Approved Color and Logos and Details of the Project Provided on Site. As per Directions of Engineer in Charge.	Nos	1		
7	Supply and Installation of Visibility 18SWG Gauge (0.050"/1.27mm) Stainless Steel plate size (2' ft x 1.5'ft) with logo and project title and scheme details etc.	Nos	1		
Total Cost of Civil Works Materials (Rs.)					
(B) Repairing & Replacement of Doors, Windows, Windows Mesh, Cupboards, & others works like fixing of locks, alignment, tower bolt etc.					
Sr #	Item Description	Units	Qty	Unit Rate	Total
1	Replacement of standard size main wooden door of class room size 4*7 ft, fixing in galvanized frame along with 1'ft ventilator, horns size 6" inch 3 horns each side (top, center, & bottom), 2 Handles inside, 3 hinges of 4" size on each side, 2 Bolt Inside and 1 lock outside. with proper paint Color and filling and others accessories Etc.	Nos.	2		
2	Minor Repairing of standard size main wooden door of class room size, fixing in galvanized frame along with 1'ft ventilator, horns size 6" inch 3 horns each side (top, center, & bottom), 2 Handles inside, 3 hinges of 4" size on each side, 2 Bolt Inside and 1 lock outside. Double opening, with proper paint Color and filling and others accessories Etc.	Nos.	1		

3	Perform Minor Repairing of iron window panel 2*4 fixing in galvanized frame horns size 4" inch 3 horns each side (top, center, & bottom) other accessories: Screws, anchors, and necessary hardware with proper paint Color and filling and others accessories Etc.	Nos.	6		
4	Providing and fixing 2'-9" high Stair hand railing for supporting PWDs, comprising of 2½" dia 16-gauge S.S pipe hand rail fixed with 2½" dia pipe blusters at specified distance fixed at top of steps with expansion bolts, 2 Nos. of 16 gauge 1" dia S.S pipes horizontally fixed with blusters, Complete in all respects as per directions of site engineer.	Job	2		
5	Aluminum Hand Rail For disabled persons (Blind) So that they may use it for their easy access. HT Pole 50mm & VT Pole 25mm, complete in all aspects as decided by Engineer in charge at site. As specified by Engineer	Rft	10		
6	Supply & Fixing of Broken windowpanes (Glass piece) in classroom size (3ft x 1.5ft) and thickens (5mm) with all aspect	Nos.	20		
Total Cost for Installation and Fixing of Windows, Doors and others Cabinets (Rs.)					
(C) Paint, Distempering, Whitewash Works					
Sr #	Item Description	Units	Qty	Unit Rate	Total
1	Weather Shield for external exposed surfaces of approved shade in two or more coats as per engineer's instructions on plastered rendered and/or concrete surface over and including the cost of priming coat, surface preparation, dusting, rubbing down smooth, filling cracks, holes removing blisters and other blisters and other imperfections in ground floor or basement. (at least 1.65 Liter per 10 Sq.m) as per instruction of Engineer	Sft	4044		
2	Painting with approved quality Matt paint for Internal in two or more coats as per engineer's instructions on plastered rendered and/or concrete surface over and including the cost of priming coat, surface preparation, dusting, rubbing down smooth, filling cracks, holes removing blisters and other blisters and other imperfections in ground floor or basement. (at least 1.65 Liter per 10 Sq.m) as per instruction of Engineer	Sft	1400		
	Painting old & new surfaces: Doors / windows/main gate, , Each subsequent coats	Sft	400		
Total Cost of Whitewash Works (Rs.)					
Grand Total of (A+B+C) inclusive of taxes (Rs.)					

4: Rehabilitation/Construction of Sanitation Facilities

(1) Rehabilitation of 02 Latrines at GBHS Marah Tangi (Loralai)					
Sr #	Description of Work	Unit	Qty	Unit Rate	Amount
1	Providing and laying of PVC (B Class) pipes 4" dia from septic tank to 02 Rehabilitated Latrines.	Rft	50		
2	Providing and laying plain cement plaster of 1:4 ratio with fine sand and 0.5" thickness including proper curing for both internal & external works.	sft	301		
3	providing and laying 1/4" to 3/8" (6mm to 9mm) thick Glazed/ Matt tiles of white color and size in floor laid up to 5 feet over 1" (25mm) thick cement sand mortar base including jointing and washing the tiles with white cement slurry of matching color by using color pigment and curing etc. as per directions of site engineer	Sft	490		
4	Painting with approved quality Matt paint for Internal in two or more coats as per engineer's instructions on plastered rendered and/or concrete surface over and including the cost of priming coat, surface preparation, dusting, rubbing down smooth, filling cracks, holes removing blisters and other blisters and other imperfections in ground floor or basement. (at least 1.65 Liter per 10 Sq.m) as per directions of site engineer.	Sft	250		
5	Minor Repairing of wooden door of Latrine size 2.5x6', fixing in galvanized frame along with 1'ft ventilator, horns size 6" inch 3 horns each side (top, center, & bottom), 2 Handles inside, 3 hinges of 4" size on each side, 2 Bolt Inside and 1 lock outside. with proper paint Color and filling and others accessories Etc.	Job	3		
Cost of Latrine inclusive of taxes (Rs.)					

(2) Rehabilitation of 02 Latrine at GBMS Uryagi Ganno Khan (Loralai)					
Sr #	Description of Work	Unit	Qty	Unit Rate	Amount
1	Dismantling of 02 latrines floors size (6'ftx 6'ft) and old PCC floor including commode material in foundation, plinth or under floor and where necessary.	Job	2		
2	Providing and laying of mixed plain cement concrete (PCC 1:2:4) in foundation, flooring; using graded crushed boulders 3/4 inch (19mm) and down; shuttering and its removal, compacting and curing.	Cft	10		
3	Providing and laying plain cement plaster of 1:4 ratio with fine sand and 0.5" thickness including proper curing for both internal & external works.	Sft	56		

4	Providing and fixing of MS iron door size (2.5' x 6') and angle iron size (1.5"x1.5") using of 18SWG iron sheet and 2 or 3 coats final painted with fixing MAP steel logo, cross weld with angle iron or as per standard specifications approved by engineer in charge	Job	2		
5	Providing and fixing of ventilator (1.5' x 1.5') as per standard specifications (window mesh and grill) approved by engineer in charge; with painted.	Job	2		
6	Painting with approved quality Matt paint for Internal of approved shade in two or more coats as per engineer's instructions on plastered rendered and/or concrete surface over and including the cost of priming coat, surface preparation, dusting, rubbing down smooth, filling cracks, holes removing blisters and other blisters and other imperfections in ground floor or basement. at least 1.65 Liter per 10 Sq.m) as per Instruction Engineer	Sft	200		
7	Weather Shield for external exposed surfaces of approved shade in two or more coats as per engineer's instructions on plastered rendered and/or concrete surface over and including the cost of priming coat, surface preparation, dusting, rubbing down smooth, filling cracks, holes removing blisters and other blisters and other imperfections in ground floor or basement. (@ at least 1.65 Litre per 10 Sq.m) as per instruction of Engineer	Sft	280		
8	Providing and fixing Indian squatting toilets (Desi) type water closet with P-Trap fixed at 6" from Floor of approved brands or equivalent make including the cost of flush tank pipe kit, stop cock deluxe type and other accessories, fittings, brackets, PVC down pipe, rubber rings/washers, making requisite number of holes in walls, plinth and floor for pipe connection and making good with site engineer's approved material on site.	Set	2		
9	Providing & fixing of good quality 3/4" 75mm dia PPRC pipe for sanitary fitting, including Valves, Elbow, Bib-Cocks 3/4", Socket Tee joint, Cutting & Jointing etc., as per directions of engineer in charge.	Rft	35		
10	Provide and fixing of PVC (B Class) pipe 2.5" in dia with clips and nails. (vent pipe) with Fly screen	Rft	10		
11	Providing and fixing of floor Drain Mesh (The drain covers fixing top on the floor drain in the latrine)	No's	2		
12	Providing & fixing of good quality 1/2" dia HDPE pipe of PN-10 or higher for the main source of water to the school	Rft	150		
13	providing and laying 1/4" to 3/8" (6mm to 9mm) thick Glazed/ Matt tiles of white color and size in floor laid up to 5 feet over 1" (25mm) thick cement sand mortar base including jointing and washing the tiles with white cement slurry of matching color by using color pigment and curing etc as per directions of site engineer	Sqft	280		
Cost of Latrine inclusive of taxes (Rs.)					

(3) Rehabilitation of 04 Latrine at GBPS Rodline (Loralai)

Sr #	Description of Work	Unit	Qty	Unit Rate	Amount
1	Providing and laying of mixed plain cement concrete (PCC 1:2:4) in foundation, flooring; using graded crushed boulders 3/4 inch (19mm) and down; shuttering and its removal, compacting and curing.	Cft	12		
2	Providing and fixing of ventilator (1.5' x 1.5') as per standard specifications (window mesh and grill) approved by engineer in charge; with painted.	Job	2		
3	Providing and laying of mixed plain cement concrete (PCC 1:2:4) Ramp using graded crushed boulders 3/4 inch (19mm) and down; with finishing and proper curing.	Cft	20		
4	Providing and fixing of MS iron door size (2.5' x 6') and provide angle iron size (1.5"x1.5") using of 18SWG iron sheet and 2 or 3 coats final painted with fixing MAP steel logo, cross weld with angle iron or as per standard specifications approved by engineer in charge	Job	2		
5	Providing and laying plain cement plaster of 1:4 ratio with fine sand and 0.5" thickness including proper curing for both internal & external works.	Sft	80		
6	Painting with approved quality Matt paint for Internal of approved shade in two or more coats as per engineer's instructions on plastered rendered and/or concrete surface over and including the cost of priming coat, surface preparation, dusting, rubbing down smooth, filling cracks, holes removing blisters and other blisters and other imperfections in ground floor or basement. At least 1.65 Liter per 10 Sq.m) as per Instruction Engineer	Sft	300		
7	Weather Shield for external exposed surfaces of approved shade in two or more coats as per engineer's instructions on plastered rendered and/or concrete surface over and including the cost of priming coat, surface preparation, dusting, rubbing down smooth, filling cracks, holes removing blisters and other blisters and other imperfections in ground floor or basement. At least 1.65 Liter per 10 Sq.m) as per instruction of Engineer	Sft	520		
8	Providing & fixing of good quality 3/4" 75mm dia PPRC pipe for sanitary fitting, including Valves, Elbow, Bib-Cocks 3/4", Socket Tee joint, Cutting & Jointing etc., as per directions of engineer in charge.	Rft	40		
9	Providing and fixing good quality white glazed earthen ware washbasin of approved make with single hole chromium plated mixer tap 1/2" (15mm), pillar tap deluxe, stop cocks, C.I. or W.I. brackets 6" (150mm) built into walls 1.5" (40mm) C.P. brass waste with malleable iron or C.P. brass trap with malleable iron or brass union and making requisite number of holes in walls, plinth and floor for pipe connections and making good with approved material by site engineer.	Job	1		
10	Providing and laying of PVC (B Class) pipes 4" dia from septic tank to rehabilitated Latrines.	Rft	61		
11	Provide and fixing of PVC (B Class) pipe 2.5" in dia with clips and nails. (vent pipe) with Fly screen	Rft	20		

12	Providing and fixing of floor Drain Mesh (The drain cover fixing top on the floor drain in the latrine)	No's	4		
13	Providing & fixing of good quality 1/2" dia HDPE pipe of PN-10 or higher for the main source of water to the school	Rft	150		
14	providing and laying 1/4" to 3/8" (6mm to 9mm) thick Glazed/ Matt tiles of white color and size in floor laid up to 5 feet over 1" (25mm) thick cement sand mortar base including jointing and washing the tiles with white cement slurry of matching color by using color pigment and curing etc as per directions of site engineer	Sft	640		
15	Minor Repairing of wooden door of Latrine size 2.5*7 , fixing in galvanized frame along with 1'ft ventilator, horns size 6" inch 3 horns each side (top, center, & bottom), 2 Handles inside, 3 hinges of 4" size on each side, 2 Bolt Inside and 1 lock outside. with proper paint Color and filling and others accessories Etc.	No's	2		
16	Providing and fixing LDPE overhead tank of 3-Ply Water Storage Tank with 300 gallons storage capacity, based on the approval of site engineer at site.	Nos.	1		
17	Providing and fixing 2'-9" high Stair hand railing for supporting PWDs, comprising of 2½" dia 16-gauge S.S pipe hand rail fixed with 2½" dia pipe blusters at specified distance fixed at top of steps with expansion bolts, 2 Nos. of 16 gauge 1" dia S.S pipes horizontally fixed with blusters, Complete in all respects as per directions of site engineer.	Job	2		
18	Aluminum Hand Rail for Disabled persons (Blind) So that they may use it for their easy access. HT Pole 50mm & VT Pole 25mm Complete in all aspects as decided by Engineer in charge at site. As specified by Engineer	Rft	10		

Cost of Latrine

A. Internal Electrification

Sr #	Description of Work	Unit	Qty	Unit Rate	Amount
1	Provide and using good quality copper electric cable for connection of two latrines led bulbs from main supply line	Rft	100		
2	Installation and Fixing of Good quality single phase ON/OFF switches and 12watts led lights with bulbs holder, clips, strips, joint and electric boards etc. (Single 12watts led bulb in each latrine)	Lump sum			

Cost of Electrification

B. Septic Tank

Sr #	Description of Work	Unit	Qty	Unit Rate	Amount
1	Excavation for septic tank (5'-9" x 3'-9") and 5'-7" depth in all kinds of soil including rock and removing all vegetation along with their roots and back filling selected excavated material under floor and where necessary.	Cft	120		
2	Providing and laying of machine mixed plain cement concrete (PCC 1:2:4) for foundation, floor. Using graded, crushed boulders 3/4 inch (19mm) and down; fulfilling minimum cube crushing at 28 days compacting and curing,	Cft	5		

3	Providing and laying of RCC (1:2:4) for top slab, using MS Iron 12mm iron bar (Grade 40 steel) @ 6" c/c proper binding with binding wire both way in using graded cube crushed 3/4 inch (19mm) and down; with shuttering and its removal after 28 days, compacting and proper curing.	Cft	5		
4	Providing and laying first class solid burnt brick masonry set in cement sand mortar 1:5 in Septic Tank's walls 5'-3" below ground level. Including partition wall of 4.5" at 2'-9" distance. Use of water sealant (paddlo) in mortar is must.	Cft	38		
5	Providing and laying Plain Cement Plaster 1:3 ratio 0.5" thick including proper curing and scaffolding etc. with water sealant (like paddlo) as per instructions of engineer in charge	Sft	50		
6	Providing and laying of PVC (Class B) pipes 4" dia	Rft	5		
7	Provide and fixing of PVC Pipe Reducer (4"x2.5")	No's	4		
Cost of Septic Tank					
C. Soakage Pit					
Sr #	Description of Work	Unit	Qty	Unit Rate	Amount
1	Excavation for soakage pit (4'-3" dia and 5'-3" depth) in all kinds of soil including rock and removing all vegetation along with their roots and back filling selected excavated material where necessary.	Cft	59		
2	Providing and laying first class solid burnt brick masonry set in cement sand mortar 1:5 in Septic Tank 5'-9" below ground level.	Cft	24		
3	Providing and laying Plain Cement Plaster 1:3 ratio 0.5" thick including proper curing and scaffolding etc. with water sealant (like paddlo) as per instructions of engineer in charge	Sft	24		
4	Providing and laying of RCC (1:2:4) for top slab, using MS Iron 12mm iron bar (Grade 40 steel) @ 6" c/c proper binding with binding wire both way in using graded cube crushed 3/4 inch (19mm) and down; with shuttering and its removal after 28 days, compacting and proper curing.	Cft	8		
5	Providing and fixing of PVC Class B Pipe 3" in Dia	Rft	10		
Cost of Soakage Pit					
Grand Total inclusive of taxes (Rs.)					

(4) Rehabilitation of 02 Latrine at GBPS Shingul (Loralai)

Sr #	Description of Work	Unit	Qty	Unit Rate	Amount
1	Providing and laying of mixed plain cement concrete (PCC 1:2:4) in foundation, flooring; using graded crushed boulders 3/4 inch (19mm) and down; shuttering and its removal, compacting and curing.	Cft	11		
2	Providing and laying plain cement plaster of 1:4 ratio with fine sand and 0.5" thickness including proper curing for both internal & external works.	Sft	210		
3	Painting with approved quality Matt paint for Internal of approved shade in two or more coats as per engineer's instructions on plastered rendered and/or concrete surface over and including the cost of priming coat, surface preparation, dusting, rubbing down smooth, filling cracks, holes removing blisters and other blisters and other imperfections in ground floor or basement. (at least 1.65 Liter per 10 Sq.m)	Sft	315		
4	Providing and fixing Indian squatting toilets (Desi) type water closet with P-Trap fixed at 6" from Floor of approved brands or equivalent make including the cost of flush tank pipe kit, stop cock deluxe type and other accessories, fittings, brackets, PVC down pipe, rubber rings/washers, making requisite number of holes in walls, plinth and floor for pipe connection and making good with site engineer's approved material on site.	Set	2		
5	Providing & fixing of good quality 3/4" 75mm dia PPRC pipe for sanitary fitting, including Valves, Elbow, Bib-Cocks 3/4", Socket Tee joint, Cutting & Jointing etc., as per directions of engineer in charge.	Rft	50		
6	Providing and fixing good quality glazed earthen ware washbasin of approved make with single hole chromium plated mixer tap 1/2" (15mm), pillar tap deluxe, stop cocks, C.I. or W.I. brackets 6" (150mm) built into walls 1.5" (40mm) C.P. brass waste with malleable iron or C.P. brass trap with malleable iron or brass union and making requisite number of holes in walls, plinth and floor for pipe connections and making good with approved material by site engineer.	Set	2		
7	Provide and fixing of PVC (B Class) pipe 2.5" in dia with clips and nails. (vent pipe) with Fly screen	Rft	10		
8	Providing and fixing of floor Drain Mesh (The drain covers fixing top on the floor drain in the latrine)	No's	2		
9	Dismantling of 02 latrines floors size (6'ftx 5'ft) and old PCC floor including commode material in foundation, plinth or under floor and where necessary.	Job	2		
10	providing and laying 1/4" to 3/8" (6mm to 9mm) thick Glazed/ Matt tiles of white color and size in floor laid up to 5 feet over 1" (25mm) thick cement sand mortar base including jointing and washing the tiles with white cement slurry of matching color by using color pigment and curing etc. as per directions of site engineer	Sft	280		
11	Minor Repairing of wooden door of Latrine size 2.5*7, fixing in galvanized frame along with 1'ft ventilator, horns size 6" inch 3 horns each side (top, center, & bottom), 2 Handles inside, 3	Job	2		

	hinges of 4" size on each side, 2 Bolt Inside and 1 lock outside. with proper paint Color and filling and others accessories Etc.				
Cost of Latrine					
A. Internal Electrification					
Sr #	Description of Work	Unit	Qty	Unit Rate	Amount
1	Provide and using good quality coper electric cable for connection of two latrines led bulbs from main supply line	Rft	100		
2	Installation and Fixing of Good quality single phase ON/OFF switches and 12watts led lights with bulbs holder, clips, strips, joint and electric boards etc. (Single 12watts led bulb in each latrine)	Lump sum			
Cost of Electrification					
Grand Total inclusive of taxes (Rs.)					

(5) Rehabilitation of 02 Latrines at GGPS Haji Sattar Nasar (Loralai)					
Sr #	Description of Work	Unit	Qty	Unit Rate	Amount
1	Dismantling of 02 latrines floors size (6'ftx 6ft') and old PCC floor including commode material in foundation, plinth or under floor and where necessary.	Job	2		
2	Providing and laying of mixed plain cement concrete (PCC 1:2:4) in foundation, flooring; using graded crushed boulders 3/4 inch (19mm) and down; shuttering and its removal, compacting and curing.	Cft	10		
3	Providing and laying plain cement plaster of 1:4 ratio with fine sand and 0.5" thickness including proper curing for both internal & external works.	Sft	20		
4	Providing and fixing good quality white color glazed earthen ware washbasin of approved make with single hole chromium plated mixer tap 1/2" (15mm), pillar tap deluxe, stop cocks, C.I. or W.I. brackets 6" (150mm) built into walls 1.5" (40mm) C.P. brass waste with malleable iron or C.P. brass trap with malleable iron or brass union and making requisite number of holes in walls, plinth and floor for pipe connections and making good with approved material by site Engineer.	No's	1		
5	Painting with approved quality Matt paint for Internal of approved shade in two or more coats as per engineer's instructions on plastered rendered and/or concrete surface over and including the cost of priming coat, surface preparation, dusting, rubbing down smooth, filling cracks, holes removing blisters and other blisters and other imperfections in ground floor or basement. At least 1.65 Liter per 10 Sq.m) as per Instruction Engineer	Sft	250		
6	Weather Shield for external exposed surfaces of approved shade in two or more coats as per engineer's instructions on plastered rendered and/or concrete surface over and including the cost of priming coat, surface preparation, dusting, rubbing down smooth, filling cracks, holes removing blisters and other blisters and other imperfections in ground	Sft	220		

	floor or basement. At least 1.65 Liter per 10 Sq.m) as per instruction of Engineer				
7	Providing and fixing Indian squatting toilets (Desi) type water closet with P-Trap fixed at 6" from Floor of approved brands or equivalent make including the cost of flush tank pipe kit, stop cock deluxe type and other accessories, fittings, brackets, PVC down pipe, rubber rings/washers, making requisite number of holes in walls, plinth and floor for pipe connection and making good with site engineer's approved material on site.	Set	2		
8	Providing & fixing of good quality 1/2" dia HDPE pipe of PN-10 or higher for the main source of water to the school	Rft	100		
9	Providing & fixing of good quality 3/4" 75mm dia PPRC pipe for sanitary fitting, including Valves, Elbow, Bib-Cocks 3/4", Socket Tee joint, Cutting & Jointing etc., as per directions of engineer in charge.	Rft	40		
10	Providing and laying of PVC (B Class) pipes 4" dia soak pit to hand wash station	Rft	10		
11	Provide and fixing of PVC (B Class) pipe 2.5" in dia with clips and nails. (vent pipe) with Fly screen	Rft	10		
12	Providing and fixing of floor Drain Mesh (The drain covers fixing top on the floor drain for sink hole)	No's	2		
13	Replacement of 3 pipe 1/2-inch size 1ft of concrete tank for in and out connection source use waterproof sealant with proper cement mortar.	Job	2		
14	providing and laying 1/4" to 3/8" (6mm to 9mm) thick Glazed/ Matt tiles of white color and size in floor laid up to 5 feet over 1" (25mm) thick cement sand mortar base including jointing and washing the tiles with white cement slurry of matching color by using color pigment and curing etc. as per directions of site engineer	Sft	500		
15	Minor Repairing of Ms iron door of Latrine size 2.5*6 , fixing in galvanized frame horns size 6" inch 3 horns each side (top, center, & bottom), 2 Handles inside, 3 hinges of 4" size on each side, 2 Bolt Inside and 1 lock outside. with proper paint Color and filling and others accessories Etc.	Job	2		
16	Providing and fixing of ventilator (1.5' x 1.5') as per standard specifications (window mesh and grill) approved by engineer in charge; with painted.	Job	2		
Cost of Latrine					
A. Internal Electrification					
Sr #	Description of Work	Unit	Qty	Unit Rate	Amount
1	Provide and using good quality coper electric cable for connection of two latrines led bulbs from main supply line	Rft	100		
2	Installation and Fixing of Good quality single phase ON/OFF switches and 12watts led lights with bulbs holder, clips, strips, joint and electric boards etc. (Single 12watts led bulb in each latrine)	Lump sum			
Cost of Electrification					

B. Septic Tank					
Sr #	Description of Work	Unit	Qty	Unit Rate	Amount
1	Excavation for septic tank (5'-9" x 3'-9") and 5'-9" depth in all kinds of soil including rock and removing all vegetation along with their roots and back filling selected excavated material under floor and where necessary.	Cft	120		
2	Providing and laying of machine mixed plain cement concrete (PCC 1:2:4) for foundation, floor. Using graded, crushed boulders 3/4 inch (19mm) and down; shuttering and its removal, compacting and curing,	Cft	5		
3	Providing and laying of RCC (1:2:4) for top slab, using MS Iron 12mm iron bar (Grade 40 steel) @ 6" c/c proper binding with binding wire both ways in using graded cube crushed 3/4 inch (19mm) and down; with shuttering and its removal after 28 days, compacting and proper curing.	Cft	5		
4	Providing and laying first class solid burnt brick masonry set in cement sand mortar 1:5 in Septic Tank's walls 5'-3" below ground level. Including partition wall of 4.5" at 2'-9" distance. Use of water sealant (paddlo) in mortar is must.	Cft	37		
5	Providing and laying Plain Cement Plaster 1:3 ratio 0.5" thick including proper curing and scaffolding etc. with water sealant (like paddlo) as per directions of engineer in charge	Sft	110		
6	Providing and laying of PVC (Class B) pipes 4" dia	Rft	10		
7	Provide and fixing of PVC Pipe Reducer (4"x2.5")	No's	2		
Cost of Septic Tank					
C. Soakage Pit					
Sr #	Description of Work	Unit	Qty	Unit Rate	Amount
1	Excavation for soak pit (4'-3" dia and 5'3 ft depth) in all kinds of soil including rock and removing all vegetation along with their roots and back filling selected excavated material where necessary.	Cft	59		
2	Providing and laying first class solid burnt brick masonry set in cement sand mortar 1:5 in Septic Tank 5'-9" below ground level.	Cft	25		
3	Plain Cement Plaster 1:3 ratio 0.5" thick including proper curing and scaffolding etc. with water sealant (like paddlo).	Sft	24		
4	Providing and laying of RCC (1:2:4) for top slab, using MS Iron 12mm iron bar (Grade 40 steel) @ 6" c/c proper binding with binding wire both ways in using graded cube crushed 3/4 inch (19mm) and down; with shuttering and its removal after 28 days, compacting and proper curing.	Cft	8		
5	Providing and fixing of PVC Class B Pipe 3" inch Dia	Rft	10		
Cost of Soakage Pit					
Grand Total inclusive of taxes (Rs.)					

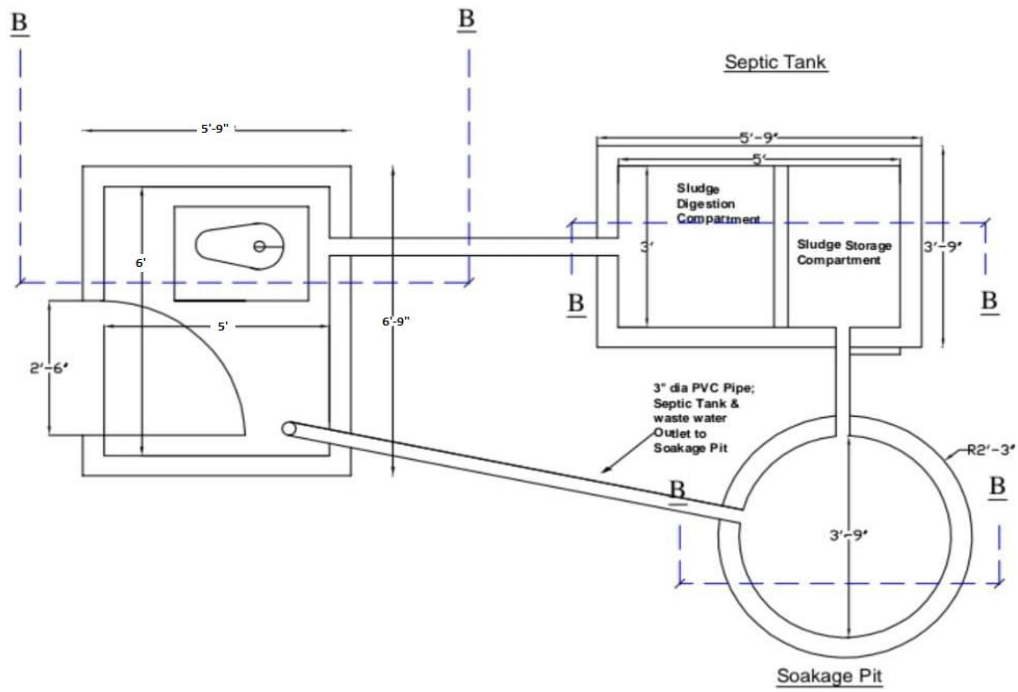
(6) Construction of 03 New Latrine at Government Schools in District Loralai

Sr #	Description of Work	Unit	Qty	Unit Rate	Amount
1	Excavation in foundation (1.5' wide and 1' deep) in all kinds of soil including rock and removing all vegetation along with their roots and back filling selected excavated material in foundation, plinth or under floor and where necessary.	Cft	37.63		
2	Providing and laying of mixed plain cement concrete (PCC 1:2:4) in foundation, flooring; using graded crushed boulders 3/4 inch (19mm) and down; with finishing and proper curing.	Cft	16.19		
3	Providing and laying of mixed plain cement concrete (PCC 1:2:4) Ramp using graded crushed boulders 3/4 inch (19mm) and down; with finishing and proper curing.	Cft	20.00		
4	Providing and laying of mixed plain cement concrete (PCC 1:2:4) in DPC; using graded crushed boulders 3/4 inch (19mm) and down; with finishing, proper curing, along with providing and laying bitumen 2 Coats over spreading of plastic sheet.	Cft	4.39		
5	Providing and laying of mixed Reinforced cement concrete (RCC 1:2:4) in Lintels; using graded crushed boulders 3/4 inch (19mm) and down, with finishing and proper curing,	Cft	0.80		
6	Providing and laying first class solid burnt brick masonry including scaffolding, raking out joints and curing in foundation and substructure/Basement/ground level. with cement sand mortar CSM 1:5 ratio with 4.5-inch wall thickness	Cft	133.41		
7	Providing and laying 1/4" to 3/8" (6mm to 9mm) thick Glazed/ Matt tiles of any color and size in floor laid up to 5 feet over 1" (25mm) thick cement sand mortar base including jointing and washing the tiles with white cement slurry of matching color by using color pigment and curing etc as per directions of site engineer	Cft	121.25		
8	Providing and Laying T-Iron (MS Size 2" x 1.5" and 3/16" thickness) each T-Iron 7' Rft long (Weight 1000grms/ ft)	No's	5		
9	Providing and Laying of Roofing using Roof Tiles (Size 12" x 6" and 1.5" thickness)	No's	85		
10	Provide and laying Grouting on roof using ratio 1:4 slurry, double Plastic Sheet and laying of Clay over roof	Sft	35		
11	Supplying and fixing of ventilator (1.5' x 1.5') as per standard specifications (window mesh and grill) approved by engineer in charge; with painted.	No's	1		
12	Supplying and fixing of MS iron door size (2.5' x 6') with fixing (1.5"x1.5") angle iron and using of 18 SWG Zigzag-iron sheet and 2 or 3 coats final painted with fixing MAP steel logo, cross weld with angle iron or as per standard specifications approved by engineer in charge	No's	1		
13	Providing and laying plain cement plaster of 1:4 ratio with fine sand and 1/2" thickness including proper curing for both internal & external works.	Sft	303.65		

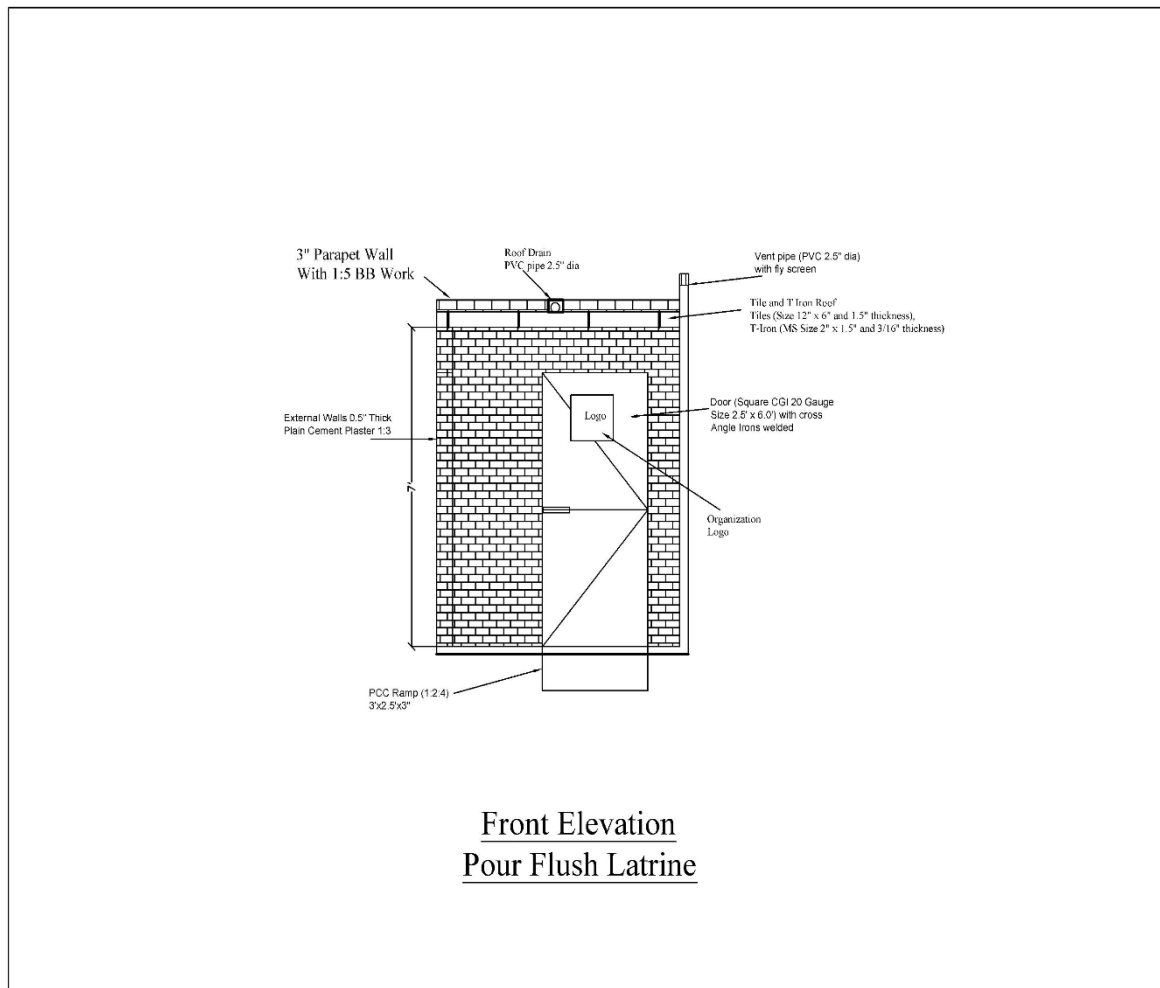
14	Providing and fixing Indian squatting toilets (Desi) type water closet with P-Trap fixed at 6" from Floor of approved brands or equivalent make including the cost of flush tank pipe kit, stop cock deluxe type and other accessories, fittings, brackets, PVC down pipe, rubber rings/washers, making requisite number of holes in walls, plinth and floor for pipe connection and making good with site engineer's approved material on site.	No's	1		
15	Providing and fixing Commode - English Type water closet with P-Trap fixed at 6" from Floor of approved brands or equivalent make including the cost of flush tank pipe kit, stop cock deluxe type and other accessories, fittings, brackets, PVC down pipe, rubber rings/washers, making requisite number of holes in walls, plinth and floor for pipe connection including MUSLIM SHOWER and making good with site engineer's approved material on site	No's	1		
16	Providing, laying, cutting, jointing, testing and disinfecting PPRC pipes 25 mm external diameter confirming, PN-20 or equivalent nominal pressure approved by the site engineer, complete in all respects with specials and valves etc. including all fittings, connections and jointing material etc.	Rft	50		
17	Providing and fixing LDPE overhead tank of 3-Ply Water Storage Tank with 300 gallons storage capacity, based on the approval of site engineer at site.	Nos.	1		
18	Providing & fixing of Brass Taps 1/2" dia or suitable or as per instruction of engineer in charge	No's	4		
19	Providing and laying of PVC (B Class) pipes 4" dia	Rft	30		
20	Provide and fixing of PVC (B Class) pipe 2.5" in dia with clips and nails. (vent pipe) with Fly screen	Rft	10		
21	Providing and fixing good quality glazed earthen ware washbasin of approved make with single hole chromium plated mixer tap 1/2" (15mm), pillar tap deluxe, stop cocks, C.I. or W.I. brackets 6" (150mm) built into walls 1.5" (40mm) C.P. brass waste with malleable iron or C.P. brass trap with malleable iron or brass union and making requisite number of holes in walls, plinth and floor for pipe connections and making good with approved material by site engineer.	No's	1		
22	Providing and fixing 2'-9" high Stair hand railing for supporting PWDs, comprising of 2½" dia 1 6-gauge S.S pipe hand rail fixed with 2½" dia pipe blusters at specified distance fixed at top of steps with expansion bolts, 2 Nos. of 16 gauge 1" dia S.S pipes horizontally fixed with blusters, Complete in all respects as per directions of site engineer.	Job	2		
23	Aluminum Hand Rail or Disabled persons (Blind) So that they may use it for their easy access. HT Pole 50mm & VT Pole 25mm Complete in all aspects as decided by Engineer in charge at site. As specified by Engineer	Rft	10		
24	providing and laying 1/4" to 3/8" (6mm to 9mm) thick Glazed/ Matt tiles of white color and size in floor laid up to 5 feet over 1" (25mm) thick cement sand mortar base including jointing and washing the tiles with white cement slurry of matching color by using color pigment and curing etc as per directions of site engineer	Cft	121.25		

25	Painting with approved quality Matt paint for Internal and Weather Shield for external exposed surfaces of approved shade in two or more coats as per engineer's instructions on plastered rendered and/or concrete surface over and including the cost of priming coat, surface preparation, dusting, rubbing down smooth, filling cracks, holes removing blisters and other blisters and other imperfections in ground floor or basement. At least 1.65 Liter per 10 Sq.m) as per instruction of Engineer	Sft	299		
26	Providing and fixing of Drain Mesh (floor mesh) on floor	No's	1		
Cost of Latrine					
A. Internal Electrification					
Sr #	Description of Work	Unit	Qty	Unit Rate	Amount
1	Provide and laying good quality coper electric cables 3/29 for connection of two latrines led bulbs from main supply lines as per directions of site engineer.	Rft	100		
2	Installation and Fixing of Good quality single phase ON/OFF switches and 12watts led lights with bulbs holder, clips, strips, joint and electric boards etc. (Single 12watts led bulb in each latrine)	Lump sum			
Cost of Electrification					
B. Septic Tank					
Sr #	Description of Work	Unit	Qty	Unit Rate	Amount
1	Excavation for septic tank (5'-9" x 3'-9") and 5'-9" depth in all kinds of soil including rock and removing all vegetation along with their roots and back filling selected excavated material under floor and where necessary.	Cft	120		
2	Providing and laying of machine mixed plain cement concrete (PCC 1:4:8) for under floor. Using graded, crushed boulders 3/4 inch (19mm) and down; compacting and proper curing.	Cft	3.75		
3	Providing and laying of machine mixed plain cement concrete (PCC 1:2:4) in bed. Using graded, crushed boulders 3/4 inch (19mm) and down; compacting and proper curing.	Cft	5.55		
4	Providing and laying of RCC (1:2:4) for top slab, using MS Iron 12mm iron bar (Grade 40 steel) @ 6" c/c proper binding with binding wire both ways in using graded cube crushed 3/4 inch (19mm) and down; with shuttering and its removal after 28 days, compacting and proper curing.	Cft	7.12		
5	Providing and laying first class solid burnt brick masonry set in cement sand mortar 1:5 in Septic Tank's walls 5'-3" below ground level. Including partition wall of 4.5" at 2'-9" distance. Use of water sealant (paddlo) in mortar is must.	Cft	39.78		
6	Plain Cement Plaster 1:3 ratio 0.5" thick including proper curing and scaffolding etc. with water sealant (like paddlo).	Sft	110		
7	Providing and Installing 4" dia PVC pipe-Class B (IIL, Dadex or equivalent make) or laying, cutting, jointing and testing in trenches.	Rft	10		
8	Provide and fixing of PVC Pipe Reducer (4"x2.5")	No's	1		
Cost of Septic Tank					

C. Soakage Pit					
Sr #	Description of Work	Unit	Qty	Unit Rate	Amount
1	Excavation for soak pit (4'-3" dia and 5'-3" depth) in all kinds of soil including rock and removing all vegetation along with their roots and back filling selected excavated material where necessary.	Cft	59		
2	Providing and laying first class solid burnt brick masonry set in cement sand mortar 1:5 in Soakage Pit 5'-9" below ground level.	Cft	24.73		
3	Providing and laying of RCC (1:2:4) for top slab, using MS Iron 10mm iron bar (Grade 40 steel) @ 6" c/c proper binding with binding wire both way in using graded cube crushed 3/4 inch (19mm) and down; with shuttering and its removal after 28 days, compacting and proper curing.	Cft	8.44		
4	Providing and fixing of PVC Class B Pipe 3" in Dia	Rft	10		
Cost of Soakage Pit					
Total cost of 01 Latrine					
Grand Total of 03 Latrines inclusive of taxes (Rs.)					



Plan Pour Flush Latrine 6'x5'



Contractor' Signatures & Seal _____

QUANTITY / ANY OTHER DISCOUNTS (PLEASE SPECIFY):

THE PROPOSED DISCOUNTS WILL BECOME AN INTEGRAL PART OF YOUR BID SUBMISSION

PAYMENT TERMS: ACCEPTANCE OF PAYMENT TERMS (I.E. 30 DAYS NET FROM RECEIPT OF DOCUMENTS)

YES: _____ NO: _____

BIDDERS NAME AND SIGNATURE: _____

ANNEXURE B

(General Terms and Conditions for Services for Rehabilitation & Construction Work in Schools of Loralai, Balochistan)

1. ACCEPTANCE OF THE PURCHASE ORDER

This Purchase Order may only be accepted by the supplier/Contractor signing and returning an acknowledgment copy of it or by timely delivery of the **Rehabilitation & Construction Work in Schools of Loralai, Balochistan** in accordance with the terms of the Purchase Order/Contract as herein specified. Acceptance of this Purchase Order shall affect a contract between the Parties under which the rights and Obligations of the parties shall be governed solely by the terms and conditions of the purchase order including these General Conditions. No additional or inconsistent provision proposed by the supplier /Contractor shall bind **Muslim Aid (MAP)** unless agreed to in writing by a duly authorized **Muslim Aid (MAP)** official.

2. LEGAL STATUS

The supplier / Contractor shall be considered as having the legal status of an independent contractor vis-à-vis **Muslim Aid (MAP)**. The Supplier / Contractor, its personnel, and sub-contractors shall not be considered in any respect as being the employees of **Muslim Aid (MAP)**. The supplier / Contractor shall be fully responsible for all work and services performed by its employees and for all acts and omissions of such employees.

3. SOURCE OF INSTRUCTION

The supplier / Contractor shall neither seek nor accept instructions from any authority external to **Muslim Aid (MAP)** in connection with the performance under this contract. The Supplier / Contractor shall refrain from any action that may adversely affect **Muslim Aid (MAP)** and shall fulfill its commitments with the fullest regard to the interests of **Muslim Aid (MAP)**.

4. ANTI-PERSONNEL MINES

The supplier / Contractor guarantees that it is not engaged in the sale or manufacture, either directly or indirectly, of anti-personnel mines or any components produced primarily for the operation thereof. Any breach of this representation and warranty shall entitle **Muslim Aid (MAP)** to terminate this Purchase Order immediately upon notice to the supplier / Contractor, at no cost to **Muslim Aid (MAP)**.

5. CHILD LABOUR

The supplier / Contractor represents and warrants that neither it, nor any of its suppliers, is engaged in any practice inconsistent with the rights outlined in the Convention on the Rights of the Child, including Article 32 thereof, which, *inter alia*, requires that a child shall be protected from performing any work that is likely to be hazardous or to interfere with the child's education, or to be harmful to the child's health and physical, mental, spiritual, moral or social development. Any breach of this representation and warranty shall entitle **Muslim Aid (MAP)** to terminate this Purchase Order immediately upon notice to the supplier, at no cost to **Muslim Aid (MAP)**.

7. SUB-CONTRACTING

In the event the Supplier / Contractor require the services of a sub-contractor, the supplier / Contractor shall obtain the prior written approval of **Muslim Aid (MAP)** for all sub-contractors. The supplier / Contractor shall be fully responsible for all work and services performed by its sub-contractors and suppliers and for all acts and/or omissions of such sub-contractors and supplier and their personnel. The approval of **Muslim Aid (MAP)** of a sub-contractor shall not relieve the Supplier / Contractor of any of its obligations under this Purchase Order. The terms of any sub-contract shall be subject to and conform to the provision of this Order.

8. ASSIGNMENTS

The supplier / Contractor shall not assign, transfer, pledge, or make other disposition of this Order or any part thereof or of any of the supplier's / Contractor rights, claims, or obligations under this Order except with the prior written consent of **Initiative of Change (MAP)**.

9. OFFICIALS NOT TO BENEFIT

The supplier / Contractor represents and warrants that no official of **Muslim Aid (MAP)** has been, or shall be, offered by the Supplier / Contractor any direct or indirect benefit arising from this order or the award thereof. The supplier / Contractor agree that a breach of this provision is breach of an essential term of this Order.

10. ENCUMBRANCES/LIENS

The supplier / Contractor shall not cause or permit any lien, attachment or other encumbrance by any person or entity to

be placed or to remain in any public office or with Muslim Aid (MAP) against any monies due or to become due for any work done or materials furnished under this contract, or by reason of any other claim or demand against the Supplier / Contractor.

11. EXPORT LICENCE

The order is subject to the obtaining of any export license or other government authorization that may be required. It shall be the responsibility of the Supplier / Contractor to obtain such license or authorization. Should the supplier / Contractor encounter difficulties in obtaining the required export license or governmental authorization, it shall immediately bring this to the attention of Muslim Aid (MAP). Muslim Aid (MAP) will, at its discretion, use its best endeavors to assist.

12. WARRANTY

The supplier / Contractor warrants the material, construction, including finishing under this Order conform to the specification of the Order and is free from damage and defects in workmanship or materials. This warranty is without prejudice to any further guarantees that the Supplier / Contractor provides to purchasers. Such guarantees shall apply to the construction subject to this Order.

13. REJECTION

Under the Order, Muslim Aid (MAP) shall have the right to reject the material or any part thereof if they do not conform to specifications.

14. INSPECTION

Muslim Aid (MAP) or its duly accredited representative shall have the right to inspect the material / Construction work ordered for under this Order at Supplier's stores, during manufacture, in the port or places of shipment, and the Supplier shall provide all facilities for such inspection.

15. OVERRIDING CLAUSE

In the event of any conflict or inconsistencies between these General Terms and Conditions for construction or any other document which forms part of the purchase these conditions shall prevail except where they have been amended (by specific reference to the relevant clause and paragraph of these Conditions) as provided for herein.

16. FORCE MAJEURE: OTHER CHANGES IN CONDITIONS

In the event of as soon as possible after the occurrence of any cause constituting force majeure, the Supplier shall give notice and full particulars in writing to Muslim Aid (MAP) of such occurrence or change if the Supplier / Contractor is hereby rendered unable.

Wholly or in part, to perform its obligations and meet its responsibilities under this Order. The Supplier / Contractor shall also notify Muslim Aid (MAP) of any other changes in conditions or the occurrence of any even which interferes or threatens to interfere with its performance of this purchase Order. On receipt of the notice required under this Article, Muslim Aid (MAP) shall take such action as, in its sole discretion; it considers to be appropriate or necessary in the circumstances, including the granting to the Supplier of a reasonable extension of time in which to perform its obligations under this Purchase Order.

If the Supplier / Contractor is rendered permanently unable, wholly or in part, by reason of force majeure to perform its obligations and meet its responsibilities under this Order, **Muslim Aid Pakistan (MAP)** shall have the right to suspend or terminate this Purchase Order on the same terms and conditions as are provided for in Article 18, "Termination", except that the period of notice shall be seven (7) days instead of thirty (30) days.

Force majeure as used in this provision means acts of God, war (whether declared or not), invasion, revolution, insurrection, or other acts of similar nature or force.

Notwithstanding anything to the contrary in this Order, the Supplier / Contractor recognizes that the work and services will be performed under harsh or hostile conditions caused by civil unrest. Consequently, delays or failure to perform caused by events arising out of or in connection with, such civil unrest shall not, in and to itself, constitute force majeure under this Order.

17. DISPUTES – ARBITRATION

Amicable Settlement the Parties shall use their best efforts to settle amicably any dispute, controversy or claim arising out of this Order or the breach, termination or invalidity thereof. Where the parties wish to seek such an amicable settlement through conciliation, the conciliation shall take place.

18. TERMINATION OF PURCHASE ORDER

In the case of failure by the Supplier / Contractor to fulfill its obligations under the terms and conditions of the Order including but not limited to failure to obtain necessary export licenses, or failure or refusal to make delivery of all or part of the goods by the agreed delivery date or dates, **Muslim Aid Pakistan (MAP)** may, after giving the Supplier / Contractor

reasonable notice to perform without prejudice to any other rights or remedies excess on or more of the following rights.

- Procure all or part of the goods from other sources, in which event **Muslim Aid Pakistan (MAP)** may hold the Supplier / Contractor responsible for any excess cost occasioned thereby.
- Refuse to accept delivery of all or part of the scope of work.
- Cancel this Order without any liability for termination charges to **Muslim Aid Pakistan (MAP)**.

Muslim Aid (MAP) may terminate forthwith this Order at any time should the mandate or the funding of **Muslim Aid Pakistan (MAP)** be curtailed or terminated in which case the Supplier / Contractor shall be reimbursed by **Muslim Aid Pakistan (MAP)** for all reasonable costs incurred by the Supplier / Contractor prior to receipt of the notice of termination.

19. INSOLVENCY AND BANKRUPTCY

Should the Supplier / Contractor become insolvent or should control of the Supplier / Contractor change by virtue of insolvency, **Muslim Aid Pakistan (MAP)** may without prejudice to any other rights and remedies, terminate this Order by giving the Supplier / Contractor written notice of termination.

Should the Supplier / Contractor be adjudged bankrupt or should the Supplier / Contractor make a general assignment for the benefit its creditors or should a receiver be appointed on account of the Supplier's / Contractor insolvency **Muslim Aid Pakistan (MAP)** may under the terms of this Order.

20. PAYMENT INSTRUCTIONS

Muslim Aid Pakistan (MAP) shall on the fulfillment of the Delivery Terms / Completion of work, unless otherwise provided in this Order make payment by cross cheque in the name of the company within thirty days of receipt of the Suppliers / Contractor invoice along with the work done certificate from the Muslim Aid Engineer and copies of any other documentation specified in the Order.

Payment against the invoice referred to above will reflect any discount shown under the payment terms of this Order, provided payment is made within the period required by such payment terms.

ANNEXURE C (Vendor Registration Form and Instruction for completion of bid)

VENDOR REGISTRATION FORM – ANNEX C

Section 1: Company Details and General Information

1. Name of Company:	
2. Street Address:	3. P.O. Box and Mailing Address: <div style="display: flex; justify-content: space-between;"> Postal Code: City: </div> <div style="text-align: center; margin-top: 10px;">Country:</div>
4. Tel:	5. Fax:
6. Email:	7. WWW Address:
8. Contact Name and Title:	
9. Email:	
10. Parent Company (Full legal / officially registered company name):	
11. Subsidiaries, Associates - name, city, country (attach a List if necessary):	
12. International Offices/Representation (Countries where the Company has local Offices/Representation):	
13. Type of Business (Mark one only):	
Corporate/ Limited: <input type="checkbox"/> Partnership: <input type="checkbox"/> Other (specify):	
14. Nature of Business:	
Manufacturer: <input type="checkbox"/> Authorised Agent: <input type="checkbox"/> Trader: <input type="checkbox"/> Consulting Company: <input type="checkbox"/> Other (specify):	
35. Year Established:	16. Number of Full-time Employees:
17. Licence no./State where registered:	18. VAT No./Tax I.D.:
19. Technical Documents available in:	
English <input type="checkbox"/> French <input type="checkbox"/> Spanish <input type="checkbox"/> Russian <input type="checkbox"/> Arabic <input type="checkbox"/> Chinese <input type="checkbox"/> Other (specify)	
Rehabilitation & Construction Work in Schools of Loralai, Balochistan	

20. Working Languages:

English ☐ French ☐ Spanish ☐ Russian ☐ Arabic ☐ Chinese ☐ Other (specify)

21. Bank Name:

22. Branch Name:

31. Routing Bank details (if applicable): full details to be provided as per above

Section 2: Banking Information

- | | |
|---|------------------------------|
| 23. Branch Address: | 24. Tel. number: |
| 25. Fax number: | 26. Account Name: Swift/Bank |
| 27. Bank Account Number: | 28. Identifier Code (BIC): |
| 29. Account currency: | |
| 30. International Bank Account Number (IBAN): | |

Section 3: Technical Capability and Information on Goods / Services Offered

32. Quality Assurance Certification (e.g. ISO 9000 or Equivalent) (please provide a Copy of your latest Certificate):

33. For Goods only, do those offered for supply conform to National/International Quality Standards?

Yes ☐ No ☐

34. List below up to a maximum of ten (10) of your core Goods/Services offered:

Description (one Line for each Item National/International Quality Standard to which Item conforms)

Section 5: Official not to benefit

38. By signing this VRF, potential vendors confirm that they have read, understood and will comply with the MUSLIM AID policy on the “zero tolerance” that strictly prohibits the acceptance of any type of gift and/or hospitality by MUSLIM AID

Yes ☐ No ☐ Any breach of this clause may lead to the termination of all contracts your Company may

Name:
Functional Title:
Signature:
Date:

Please courier the completed BID documents to:

Procurement DepartmentMuslim Aid

Plot # 1, First Floor, Executive Business Centre,Main Double Road, FECHS,

E-11/2, Islamabad

INSTRUCTIONS FOR COMPLETION OF BID

The form should be typewritten in uppercase and completed clearly and accurately ensuring that all questions are answered. The numbers below correspond to item numbers on the registration form:

Section 1:

1. Full name of company.
2. Full street address.
3. Full mailing address (including P.O. Box, if any).
4. Telephone number, including correct country and area codes.
5. Fax number, including country and area codes.
6. Email address.
7. WWW Address.
8. Provide name of person (including title) or department to whom correspondence should be addressed.
9. Provide email address of contact person.
10. Full legal name of parent company, if any.
11. Please provide, on a separate sheet, if necessary, names and addresses of all subsidiaries & associates if any.
12. Please provide countries where the company has local offices or representation.
13. Please tick one box. If other; please specify.
14. Please tick one box. If other; please specify. If the company is a manufacturer of some products and a trader/agent of others which they do not manufacture, both boxes should be ticked.
15. Indicate the year in which the organization was established under the name shown in Item 1.
16. Indicate the total number of full-time personnel in the company.
17. Provide the license number under which the company is registered, or the State where it is registered.
18. Provide the VAT number or Tax I.D. of the company.
19. Please tick the boxes for which languages the company is able to provide technical documents. Please specify other languages.
20. Please tick the boxes for which languages the company is able to work in. Please specify other languages.

Section 2:

21. Full name of bank.
22. Name of branch.

23. Address where branch is located.
24. Telephone number, including correct country and area codes.
25. Fax number, including country and area codes.
26. Number of the company account.
27. Name in which the account is held (**important:** this should be the company name).
28. Currency of the account.
29. Swift code for the account.
International Bank Account Number (IBAN).
30. Should a routing be required for international payments, please provide full details of intermediate bank(s).

Section 3: (Documents to be submitted with Bids)

31. Pakistan Engineering Council Certificate (Validity)
32. NTN certificate
33. Statement of work
34. Company Key personal staff for this project
35. Work Plan for the construction of civil work
36. Construction Equipment list
37. Proof of Similar Project executed for last five years (List plus POs)
38. Project in Hand (List plus POs)
39. Financial Statement
40. Affidavit showing that the company is not involved in any litigation.
41. General Reputation (Provide the evidence of completion certificates of at least two previously completed projects of clients)

END